



Prepared for:

Sautter Crane Rental

2900 Black Lake Place Philadelphia, PA 19154

185 Innovation Blvd Wilmington DE.

on

1/9/2026

Please return the entire report.

Customer Sign Off

-If there are no deficiencies nothing needs to be done

-If there are any (HIGH, RED) deficiencies please follow the instructions below

The deficiencies marked HIGH in RED shall be corrected and this report must be dated, signed and email THIS ENTIRE REPORT to tony.rossi@tandemlift.com or jon.santimaw@tandemlift.com. After the signed document is received, a certification and label will be issued. The deficiencies denoted with (REC, MEDIUM, ORANGE) are recommended and are not required to be corrected to achieve certification. However those items should be corrected to improve equipment reliability and performance.

-The undersigned verifies that the deficiencies denoted with (DEF, HIGH, RED) have been corrected.

Signature

Date




Table of Contents

 High  Med  Low Section




Inspection - 185 Innovation Blvd Wilmington DE.	Lattice Boom Crane: 138255 - S203	0	0	1	1.0
---	-----------------------------------	---	---	---	------------

Overview




Breakdown by Form

Form Type	 High	 Med	 Low	# Forms
Inspection	0	0	1	1
Overall:	0	0	1	1

Breakdown by Location

Location	 High	 Med	 Low	# Forms
185 Innovation Blvd Wilmington DE.	0	0	1	1
Overall:	0	0	1	1

Breakdown by Asset

Asset Type	 High	 Med	 Low	# Assets
Lattice Boom Crane	0	0	1	1
Overall:	0	0	1	1

Tandem Lift LLC disclaims all warranties, both express and implied, relating to the information, reports, opinions and analysis disclosed to the Customer by Tandem Lift LLC. Tandem Lift LLC shall not be liable for any errors or omissions, or any losses, injury or damages arising from the use of such information, reports, opinions and analysis by the Customer.



Tandem Lift LLC
321 Enlow Place
Pennsville, NJ 08070
833-TANDEM1

Inspection

Sautter Crane Rental
2900 Black Lake Place
Philadelphia, PA 19154

FolderID: 010926S203
FormID: 27268709



Lattice Boom Crane

Completed by: Steve Edling on 01/09/2026

Location: 185 Innovation Blvd
Wilmington DE.

Serial #: 138255

TagID: S203

Status: In Service

Manufacturer: Liebherr

Model: LR1300

Capacity: 330 Tons

Length/Lift: 184 Foot Main

Hook Type: Load Block & Hook

Hook Type 2: Load Block & Hook

Priorities Found: ● 1 - Low ● 121 - Good

Miles and Hours

1. Miles	0 Miles
2. Hours	9608 Hours

Historical Records

● 3. Monthly Inspection	(SAT) Satisfactory
● 4. Documentation of Annual / Comprehensive Inspection	(SAT) Satisfactory
● 5. Equipment Modification(s) or additions	(SAT) Satisfactory
● 6. Record of Maintenance	(SAT) Satisfactory
● 7. Record of Load Test	(NA) Not Applicable

General

● 8. Sheet Metal	(SAT) Satisfactory	
● 9. Covers and Guards	(SAT) Satisfactory	
● 10. External Lights	(SAT) Satisfactory	
● 11. Housekeeping	(SAT) Satisfactory	
● 12. Safety and Warning Labels	(SAT) Satisfactory	P12
● 13. Hand Signal Chart	(SAT) Satisfactory	P13

Crawler Assembly

● 49. Car body/ Side frames	(SAT) Satisfactory
● 50. Chain, idlers and Sprocket	(NA) Not Applicable
● 51. Track Pads, and Pins	(SAT) Satisfactory
● 52. Travel Steering, Brakes, and Locking Devices	(NA) Not Applicable
● 53. Steering Clutches	(NA) Not Applicable



Operator's Station

● 54. Steps / Ladders / Handrails	(SAT) Satisfactory
● 55. Anti-Skid Stepping Surfaces	(SAT) Satisfactory
● 56. Windows	(SAT) Satisfactory



Tandem Lift LLC disclaims all warranties, both express and implied, relating to the information, reports, opinions and analysis disclosed to the Customer by Tandem Lift LLC. Tandem Lift LLC shall not be liable for any errors or omissions, or any losses, injury or damages arising from the use of such information, reports, opinions and analysis by the Customer.

●	57. Windshield Wipers	(SAT) Satisfactory	
●	58. Cab Door Restraint	(SAT) Satisfactory	
●	59. Fire Extinguisher	(SAT) Satisfactory	
●	60. Mirrors	(SAT) Satisfactory	
●	61. Seat	(SAT) Satisfactory	
●	62. Seatbelts	(SAT) Satisfactory	
●	63. Operator's Manual	(SAT) Satisfactory	
●	64. Decals	(SAT) Satisfactory	P64
●	65. Electrocution Warning Sign(inside the cab)	(SAT) Satisfactory	
●	66. Hand Signal Charts	(SAT) Satisfactory	P66
●	67. Swing Brake	(SAT) Satisfactory	
●	68. Positive Swing lock	(SAT) Satisfactory	
●	69. Control Function	(SAT) Satisfactory	
●	70. Air Pressure	(NA) Not Applicable	
●	71. Performance Indicators (Pressure)	(SAT) Satisfactory	
●	72. Posted Warnings	(SAT) Satisfactory	
●	73. Brake and Clutch	(NA) Not Applicable	
●	74. Accelerator / Throttle	(SAT) Satisfactory	
●	75. Foot Brakes, Latches, and Linkage	(SAT) Satisfactory	
Load Chart			
●	76. Ground Level, Remotely Controlled	(NA) Not Applicable	
●	77. Per Configuration	(SAT) Satisfactory	
●	78. Visible from Fixed Operator's Station	(SAT) Satisfactory	
●	79. Durable / Legible/ Secured	(SAT) Satisfactory	
Safety Devices / Operational Aids			
●	80. Horn	(SAT) Satisfactory	
●	81. Boom Angle Indicator	(SAT) Satisfactory	
●	82. Main Drum rotation indicator	(SAT) Satisfactory	
●	83. Auxiliary Drum rotation indicator	(SAT) Satisfactory	
●	84. Radius Indicator	(SAT) Satisfactory	
●	85. Crane Level Indicator	(SAT) Satisfactory	
●	86. Two-Block System	(SAT) Satisfactory	
●	87. Boom Hoist Limiting Device	(SAT) Satisfactory	
●	88. Boom Hoist Ratchet and Pawl	(NA) Not Applicable	
●	89. Outrigger / Stabilizer Position Sensor	(NA) Not Applicable	
●	90. Luffing Jib Angle Indicator	(NA) Not Applicable	
Upper Power Plant			
●	91. Performance	(SAT) Satisfactory	
●	92. Exhaust System/Guards & Insulators	(SAT) Satisfactory	
●	93. Hoses	(SAT) Satisfactory	
●	94. Reciprocating and rotating parts	(SAT) Satisfactory	
Rotating Upper Structure			
●	95. Turntable / Bearing	(SAT) Satisfactory	
●	96. Turntable / Rollers	(NA) Not Applicable	
●	97. Ring and Pinion Gear	(SAT) Satisfactory	
●	98. Ring and Pinion Gear.	(SAT) Satisfactory	
●	99. Hydraulic and Pneumatic Pumps	(SAT) Satisfactory	
●	100. Hydraulic Tubes, Fitting, and Hoses	(SAT) Satisfactory	


Tandem Lift LLC disclaims all warranties, both express and implied, relating to the information, reports, opinions and analysis disclosed to the Customer by Tandem Lift LLC. Tandem Lift LLC shall not be liable for any errors or omissions, or any losses, injury or damages arising from the use of such information, reports, opinions and analysis by the Customer.

● 101. Hydraulic Pressure	(SAT) Satisfactory	
● 102. Electrical Wiring	(SAT) Satisfactory	
● 103. Main Hoist - Brakes and Clutch System	(NA) Not Applicable	
● 104. Main Hoist - Wire Rope Reeving	(SAT) Satisfactory	P104
● 105. Main Hoist - Meets 2 rope wrap minimum	(SAT) Satisfactory	
● 106. Auxiliary Hoist - Brakes and Clutch System	(NA) Not Applicable	
● 107. Auxiliary Hoist - Wire Rope Reeving	(SAT) Satisfactory	P107
● 108. Auxiliary Hoist - Meets 2 rope wrap minimum	(SAT) Satisfactory	
● 109. Boom Hoist - Brakes and Clutch System	(NA) Not Applicable	
● 110. Boom Hoist - Wire Rope Reeving	(SAT) Satisfactory	P110
● 111. Boom Hoist - Meets 2 rope wrap minimum	(SAT) Satisfactory	P111
● 112. Swing System / Assembly	(SAT) Satisfactory	
● 113. Hydraulic and Pneumatic Pumps and Motors	(SAT) Satisfactory	
● 114. Drums and Flanges	(SAT) Satisfactory	
● 115. Clutch and Brake Protection	(NA) Not Applicable	
● 116. Torque Converter	(NA) Not Applicable	
● 117. Slip resistant walking and stepping surfaces	(SAT) Satisfactory	
● 118. Steps, Grab rails, and platforms	(SAT) Satisfactory	
● 119. Access to Cab and Roof	(SAT) Satisfactory	
● 120. Air System	(NA) Not Applicable	
● 121. Counterweight Mounting	(SAT) Satisfactory	P121
● 122. Counterweight Warnings Signs	(SAT) Satisfactory	P122
● 123. Electrocution Warnings Signs	(SAT) Satisfactory	P123
Boom Support System		
● 124. Gantry and Mast	(SAT) Satisfactory	P124
● 125. Boom Stops	(SAT) Satisfactory	
● 126. Inner Bail	(SAT) Satisfactory	P126
● 127. Outer Bail and Equalizer	(SAT) Satisfactory	P127
● 128. Sheaves	(SAT) Satisfactory	
● 129. Boom Hoist Wire Rope Reeving	(SAT) Satisfactory	
Boom		
● 130. Boom Section Identification	(SAT) Satisfactory	P130
● 131. Boom Section Sequence	(SAT) Satisfactory	
● 132. Boom Section Alignment	(SAT) Satisfactory	P132
● 133. Warning Labels and Decals	(SAT) Satisfactory	
● 134. Spreader Bar	(NA) Not Applicable	
● 135. Sheaves	(SAT) Satisfactory	
● 136. Boom Head Section	(SAT) Satisfactory	P136
● 137. Auxiliary Boom Head	(SAT) Satisfactory	P137
● 138. Lattice Members	(SAT) Satisfactory	
● 139. Cord Members	(SAT) Satisfactory	
● 140. End Connections/Pins	(SAT) Satisfactory	
● 141. Boom Foot Pins and Keepers	(SAT) Satisfactory	
● 142. Hoist Line Dead End	(SAT) Satisfactory	
● 143. Wire Rope Retainers	(SAT) Satisfactory	
Wire Rope Main Hoist drum		
● 183. Rope Damage	(SAT) Satisfactory	

Tandem Lift LLC disclaims all warranties, both express and implied, relating to the information, reports, opinions and analysis disclosed to the Customer by Tandem Lift LLC. Tandem Lift LLC shall not be liable for any errors or omissions, or any losses, injury or damages arising from the use of such information, reports, opinions and analysis by the Customer.

184. Diameter & Wear	
Size:	Diameter & Wear
28 mm	28.7 mm
185. Broken Wires	(MON) Monitor
 There is 1 broken wire about 150 foot in from end of cable. It is one wire in 6 rope diameters so it passes. I would suggest monitoring with the intent to replace soon.	
186. Lubrication	(SAT) Satisfactory
187. End Connectors	(SAT) Satisfactory
188. End Connectors, Pins, Keepers	(SAT) Satisfactory
Wire rope Auxiliary Drum 1	
189. Rope Damage	(SAT) Satisfactory
190. Diameter & Wear	
Size	Diameter / wear
28 mm	28.5 mm
191. Broken Wires	(SAT) Satisfactory
192. Lubrication	(SAT) Satisfactory
193. End Connectors	(SAT) Satisfactory
Wire rope Auxiliary Drum 2	
194. Rope Damage	(NA) Not Applicable
195. Diameter & Wear	
Size	Diameter & Wear
0	0
196. Broken Wires	(NA) Not Applicable
197. Lubrication	(NA) Not Applicable
198. End Connectors	(NA) Not Applicable
Wire rope Auxiliary drum 3	
199. Rope Damage	(NA) Not Applicable
200. Measured Wear.	(NA) Not Applicable
201. Diameter & Wear	
Size:	Diameter & Wear
0	0
202. Broken Wires	(NA) Not Applicable
203. Lubrication	(NA) Not Applicable
204. End Connectors	(NA) Not Applicable
Wire rope Boom Hoist Drum	
205. Rope Damage	(SAT) Satisfactory
206. Diameter & Wear	
Size:	Diameter & Wear:
24 mm	25.2
207. Broken Wires	(SAT) Satisfactory
208. Lubrication	(SAT) Satisfactory
209. End Connectors	(SAT) Satisfactory
Pendants & End connections	
210. Rope Damage.	(NA) Not Applicable
 Metal bars	
211. Diameter & Wear	
Size:	Diameter & Wear
0	0

Tandem Lift LLC disclaims all warranties, both express and implied, relating to the information, reports, opinions and analysis disclosed to the Customer by Tandem Lift LLC. Tandem Lift LLC shall not be liable for any errors or omissions, or any losses, injury or damages arising from the use of such information, reports, opinions and analysis by the Customer.

Load Block & Hook		
212. Capacity Marking 4 parts	(SAT) Satisfactory	P212
213. Weight Marking	(SAT) Satisfactory	
214. Sheave(s)	(SAT) Satisfactory	P214
215. Safety Latch(es)	(SAT) Satisfactory	P215
216. 0° Hook Bend or Twist	(SAT) Satisfactory	
217. 5% Hook Opening or 1/4" Max	(SAT) Satisfactory	
218. 10% Hook Wear Max	(SAT) Satisfactory	
219. Swivel	(SAT) Satisfactory	
220. Bearing	(SAT) Satisfactory	
221. Wedge Socket / End Fitting	(SAT) Satisfactory	
222. Reeving	(SAT) Satisfactory	
Overhaul Ball & Hook		
223. Capacity Marking 3 parts	(SAT) Satisfactory	P223
224. Weight Marking	(SAT) Satisfactory	
225. Safety Latches	(SAT) Satisfactory	P225
226. 0° Hook Bend or Twist	(SAT) Satisfactory	
227. 5% Hook Opening or 1/4" Max	(SAT) Satisfactory	
228. 10% Hook Wear Max	(SAT) Satisfactory	
229. Swivel / Bearing	(SAT) Satisfactory	
230. Wedge Socket / End Fitting	(SAT) Satisfactory	
No-Load Operational Test		
231. No-Load Operational Test	(SAT) Satisfactory	
Verification and Completion		
232. Inspector Name and Signature	Steven Edling	
		
233. Date of Inspection	01/09/2026	
234. Customer Name and Signature		
235. Certificate Issued	(Y) Yes	P235



P12.1



P13.2



P64.3

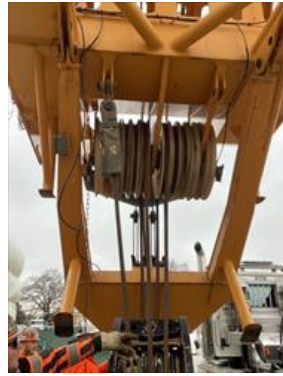


P66.4

Tandem Lift LLC disclaims all warranties, both express and implied, relating to the information, reports, opinions and analysis disclosed to the Customer by Tandem Lift LLC. Tandem Lift LLC shall not be liable for any errors or omissions, or any losses, injury or damages arising from the use of such information, reports, opinions and analysis by the Customer.



P104.5



P107.6



P110.7



P111.8



P121.9



P121.10



P122.11



P123.12



P124.13



P126.14



P126.15



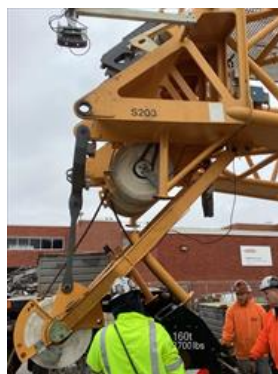
P127.16



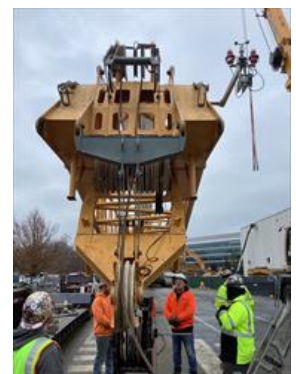
P130.17



P132.18



P136.19



P137.20

Tandem Lift LLC disclaims all warranties, both express and implied, relating to the information, reports, opinions and analysis disclosed to the Customer by Tandem Lift LLC. Tandem Lift LLC shall not be liable for any errors or omissions, or any losses, injury or damages arising from the use of such information, reports, opinions and analysis by the Customer.



P212.21



P212.22



P214.23



P215.24



P223.25



P225.26



P235.27