



Prepared for:

**Sautter Crane Rental**

on

6/6/2023

# DISCLAIMER

Inspection reports are based upon observed procedures and inspections performed by Atlantic Crane Inspection Services, but are not intended to replace or supersede the necessity for routine or preventative maintenance procedures recommended by others, such as, but not limited to: manufacturers, operators, and other inspecting organizations. Referral to applicable regulation is essential with regard to responsibilities of owners and users for use, maintenance, and normal operational inspections. It is especially important that owners and users, regularly and by means of extraordinary disassembly and/or non-destructive testing arrange to effectively examine parts of the equipment which may be reasonably accessible by routine examinations, including such examinations by Atlantic Crane Inspection Services.

Equipment owners and users should assure continuous compliance with all manufacturer's specifications, including, but not limited to: full range accuracy of load indicating devices, machinery, etc. regardless of the extent to which specifications can be evaluated during Atlantic Crane Inspection Services.

Other requirements of applicable Federal and State regulations not specifically considered with the scope of recorded by related Atlantic Crane Inspections Services' reports, remain for the continuing attention and responsibility of equipment owner and users, including, but not limited to: adequate lighting, walkways, ladders, stairways, clearance between moving and fixed structures, electrical motor restart lockouts, fire extinguishers in the vicinity, etc.



**Inspection**  
**Sautter Crane Rental**

FolderID: 12230  
FormID: 16975251



**Hydraulic Boom Crane Inspection Report  
(1910.180 & 1926.1400-1926.1441 as  
necessary)**

**Completed by: Matt Hottenstein on 06/06/2023**

Location:	USA
Serial #:	071 535
Unit #:	S216

Manufacturer:	Liebherr
Model:	LTM 1300-6.2
Capacity:	330 ton
Length/Lift:	197 FT MAIN 149 FT LUFF
Type of Crane:	Truck Crane (1910.180 & 1926.1400)
Number of Hoists:	Main Only
Boom Configuration:	Main Boom & Luffing Jlb Assembled

Priorities Found: ● 116 - Good

**Location of Equipment**

1. Location of Equipment **16 Hardenberg St. New Brunswick, NJ**

**Customer Sign Off**

2. Customer Sign Off

*IF THERE ARE NO DEFICIENCIES NOTHING NEEDS TO BE DONE.*

*IF THERE ARE ANY HIGH, RED, DEFICIENCIES PLEASE FOLLOW THE BELOW INSTRUCTIONS*

*The deficiencies marked HIGH in RED shall be corrected and this report must be dated, signed and email THIS PAGE ONLY to either jaim@atlanticcrane.com or gina@atlanticcrane.com or fax THIS PAGE ONLY to our office at 215-639-2316 and a certification and sticker will be issued. The above deficiencies denoted with (REC, MEDIUM, ORANGE) are recommended and are not required to be corrected to achieve certification. However, those items should be corrected to improve equipment reliability and safety.*

*The undersigned verifies the listed deficiencies denoted with an (DEF, HIGH, RED) have been corrected.*

\_\_\_\_\_  
Signature

\_\_\_\_\_  
Date

**Inspection Information**

3. Inspection Number	<b>23060601MH</b>
4. Inspection Date	<b>06/06/2023</b>
● 5. Inspection Type	<b>(Ann) Annual</b>

**Hours and Miles**

- 6. Hours
- 7. Miles

**Information & Records**

● 8. Documentation of Annual / Comprehensive Inspection	<b>(SAT) Satisfactory</b>
● 9. Monthly Inspection	<b>(SAT) Satisfactory</b>
● 10. Record of Maintenance	<b>(SAT) Satisfactory</b>
● 11. Hand Signal Chart	<b>(SAT) Satisfactory</b>

Atlantic Crane Inspection Services disclaims all warranties, both express and implied, relating to the information, reports, opinions and analysis disclosed to the Customer by Atlantic Crane Inspection Services. Atlantic Crane Inspection Services shall not be liable for any errors or omissions, or any losses, injury or damages arising from the use of such information, reports, opinions and analysis by the Customer.

● 12. Safety and Warning Labels	(SAT) Satisfactory
● 13. Operator's Manual	(SAT) Satisfactory
<b>Safety Devices / Operational Aids</b>	
● 14. Audible Reverse Signal Alarm	(SAT) Satisfactory
● 15. Audible Warning Device	(SAT) Satisfactory
● 16. Boom Angle Indicator	(SAT) Satisfactory
● 17. Boom Length Indicator	(SAT) Satisfactory
● 18. Drum Rotation Indicator	(SAT) Satisfactory
● 19. Two-Block System	(SAT) Satisfactory
● 20. Load Moment Indicator	(SAT) Satisfactory
● 21. Load Weight Indicator	(SAT) Satisfactory
● 22. Level Indicator	(SAT) Satisfactory
● 23. Fire Extinguisher	(SAT) Satisfactory
<b>Load Chart</b>	
● 24. Load Chart	(SAT) Satisfactory
● 25. Per Configuration	(SAT) Satisfactory
● 26. Visible from Fixed Operator's Station	(SAT) Satisfactory
<b>Carrier</b>	
● 27. Steering	(SAT) Satisfactory
● 28. Parking Brake	(SAT) Satisfactory
● 29. External Lights (Headlights, Taillights, Brake Lights)	(SAT) Satisfactory
● 30. Windshield Wipers	(SAT) Satisfactory
● 31. Windows / Mirrors	(SAT) Satisfactory
● 32. Wheels/Tires	(SAT) Satisfactory
● 33. Engine Performance	(SAT) Satisfactory
● 34. Exhaust System	(SAT) Satisfactory
● 35. Drive Line	(SAT) Satisfactory
● 36. Main Frame Members	(SAT) Satisfactory
● 37. Hydraulic Hoses, Fittings, Tubes	(SAT) Satisfactory
● 38. Hydraulic Fluid Level	(SAT) Satisfactory
● 39. Hoses / Tubing / Fittings .	(SAT) Satisfactory
● 40. Slip Resistant Walking surface	(SAT) Satisfactory
<b>Outriggers</b>	
● 41. Boxes & Beams	(SAT) Satisfactory
● 42. Hydraulic Cylinders	(SAT) Satisfactory
● 43. Pad / Float	(SAT) Satisfactory
● 44. Hoses / Tubing / Fittings	(SAT) Satisfactory
● 45. Holding Valves	(SAT) Satisfactory
● 46. Caution / Warning Signs	(SAT) Satisfactory
<b>Operator's Station</b>	
● 47. Windows/Wipers	(SAT) Satisfactory
● 48. Cab Door Restraint	(SAT) Satisfactory
● 49. Cab Access	(SAT) Satisfactory
● 50. Steps / Ladders / Handrails	(SAT) Satisfactory
● 51. Anti-Skid Stepping Surfaces	(SAT) Satisfactory
● 52. Fire Extinguisher	(SAT) Satisfactory
● 53. Electrocution Warning Sign(s)	(SAT) Satisfactory

Atlantic Crane Inspection Services disclaims all warranties, both express and implied, relating to the information, reports, opinions and analysis disclosed to the Customer by Atlantic Crane Inspection Services. Atlantic Crane Inspection Services shall not be liable for any errors or omissions, or any losses, injury or damages arising from the use of such information, reports, opinions and analysis by the Customer.

● 54. Horn	(SAT) Satisfactory
● 55. Controls Identified	(SAT) Satisfactory
● 56. Control Functions	(SAT) Satisfactory
● 57. Power Plant Controls	(SAT) Satisfactory
● 58. Operator Cutoff (Deadman) Switch	(SAT) Satisfactory
<b>Rotating Upper Structure</b>	
● 59. Engine Performance	(SAT) Satisfactory
● 60. Exhaust System/Guards & Insulators	(SAT) Satisfactory
● 61. Hoses	(SAT) Satisfactory
● 62. Counterweight Frame	(SAT) Satisfactory
● 63. Ring and Pinion Gear	(SAT) Satisfactory
● 64. Hydraulic and Pneumatic Pumps	(SAT) Satisfactory
● 65. Hydraulic Tubes, Fitting, and Hoses	(SAT) Satisfactory
● 66. Hydraulic Pressure	(SAT) Satisfactory
● 67. Electrical Wiring	(SAT) Satisfactory
● 68. Swing System / Assembly	(SAT) Satisfactory
● 69. Counterweight Mounting	(SAT) Satisfactory
● 70. Counterweight Posted Warnings	(SAT) Satisfactory
● 71. Electrocutation Posted Warnings	(SAT) Satisfactory
● 72. Structure	(SAT) Satisfactory
<b>Hoist System</b>	
● 73. Brakes and Clutch System	(SAT) Satisfactory
● 74. Wire Rope Reeving	(SAT) Satisfactory
● 75. 2 Rope Wrap Minimum	(SAT) Satisfactory
● 76. Motor	(SAT) Satisfactory
● 77. Drums/Lagging/Flanges	(SAT) Satisfactory
● 78. Anchor System	(SAT) Satisfactory
● 79. Hoist Spooling	(SAT) Satisfactory
<b>Main Boom</b>	
● 80. Lift Cylinder(s)	(SAT) Satisfactory
● 81. Telescoping Boom Cylinder(s)	(SAT) Satisfactory
● 82. Hydraulic Hoses, Tubes, and Fittings	(SAT) Satisfactory
● 83. Holding Device	(SAT) Satisfactory
● 84. Boom Sections Alignment	(SAT) Satisfactory
● 85. Wear Pads	(SAT) Satisfactory
● 86. Sheaves	(SAT) Satisfactory
● 87. Boom Hinge Pin	(SAT) Satisfactory
● 88. Boom Head Section	(SAT) Satisfactory
● 89. Auxiliary Boom Head	(SAT) Satisfactory
● 90. Structure	(SAT) Satisfactory
<b>Luffing Boom Attachment</b>	
● 91. Luffing Jib Section Identification	(SAT) Satisfactory
● 92. Luffing Jib Section Sequence	(SAT) Satisfactory
● 93. Luffing Jib Tip Section	(SAT) Satisfactory
● 94. Luffing jib Warning Decals	(SAT) Satisfactory
● 95. Luffing Jib Point Sheaves	(SAT) Satisfactory
● 96. Luffing Hoist Line Dead End	(SAT) Satisfactory

Atlantic Crane Inspection Services disclaims all warranties, both express and implied, relating to the information, reports, opinions and analysis disclosed to the Customer by Atlantic Crane Inspection Services. Atlantic Crane Inspection Services shall not be liable for any errors or omissions, or any losses, injury or damages arising from the use of such information, reports, opinions and analysis by the Customer.

● 97. Luffing Jib Foot Keepers and Pins	(SAT) Satisfactory
● 98. Lattice Members	(SAT) Satisfactory
● 99. Cord Members	(SAT) Satisfactory
● 100. End Connections and Pins	(SAT) Satisfactory
● 101. Luffing Jib Angle Indicator	(SAT) Satisfactory
● 102. Guard Rails	(SAT) Satisfactory
● 103. Luffing Jib Stops	(SAT) Satisfactory
● 104. Walking Surfaces	(SAT) Satisfactory
● 105. Luffing Jib Hoist Reeving	(SAT) Satisfactory

### Main Drum Wire Rope

106. Diameter and wear

Size	Construction	Number of Parts of Line
<b>23mm</b>	<b>RR</b>	<b>1</b>

● 107. Rope Damage	(SAT) None Visible at Time of inspection
● 108. Lubrication	(SAT) Satisfactory
● 109. End Connectors	(SAT) Satisfactory

### Luffing Jib Wire Rope

110. Diameter & Wear

Size	Construction
<b>23mm</b>	<b>RR</b>

■ *Aux winch/wire rope used for luffing wire rope*

● 111. Rope Damage	(SAT) None Visible at Time of inspection
● 112. Lubrication	(SAT) Satisfactory
● 113. End Connectors	(SAT) Satisfactory

### Main Hoist Load Block/Ball & Hook

114. Capacity & Weight

Capacity	Weight
<b>12.5 m ton</b>	<b>350 kg</b>

● 115. Capacity Marking	(SAT) Satisfactory
● 116. Weight Marking	(SAT) Satisfactory
● 117. Sheave(s)	(SAT) Satisfactory
● 118. Safety Latch(es)	(SAT) Satisfactory
● 119. 0° Hook Bend or Twist	(SAT) Satisfactory
● 120. 5% Hook Opening or 1/4" Max	(SAT) Satisfactory
● 121. 10% Hook Wear Max	(SAT) Satisfactory
● 122. Bearing	(SAT) Satisfactory
● 123. Wedge Socket / End Fitting	(SAT) Satisfactory
● 124. Reeving	(SAT) Satisfactory

### Verification and Completion

125. Inspector Name and Signature



126. Additional Inspection Notes

P127

Atlantic Crane Inspection Services disclaims all warranties, both express and implied, relating to the information, reports, opinions and analysis disclosed to the Customer by Atlantic Crane Inspection Services. Atlantic Crane Inspection Services shall not be liable for any errors or omissions, or any losses, injury or damages arising from the use of such information, reports, opinions and analysis by the Customer.

Additional block inspected  
Cap. 40 m ton Wt 500 kg + 500kg of cheek weight

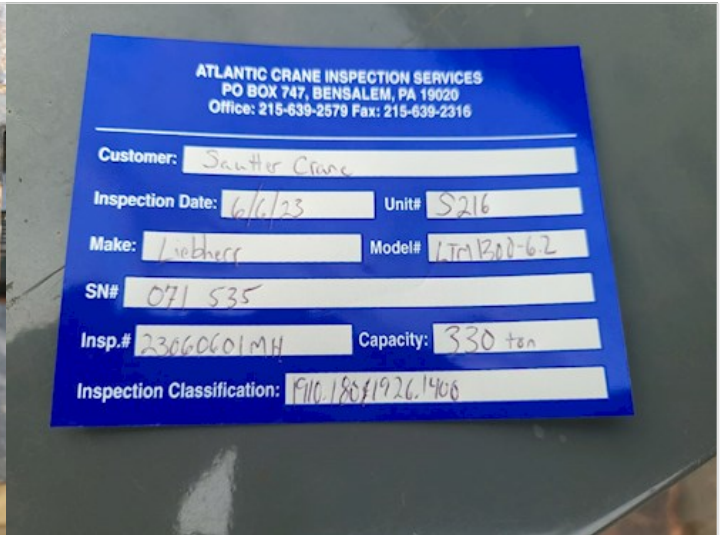
No visible deficiencies found at the time of Inspection

127. Sticker Given

(Y) Yes, Given on Site P128



P127.1



P128.2

Atlantic Crane Inspection Services disclaims all warranties, both express and implied, relating to the information, reports, opinions and analysis disclosed to the Customer by Atlantic Crane Inspection Services. Atlantic Crane Inspection Services shall not be liable for any errors or omissions, or any losses, injury or damages arising from the use of such information, reports, opinions and analysis by the Customer.