



Prepared for:

K&H Reclamation LLC

on

7/6/2023

DISCLAIMER

Inspection reports are based upon observed procedures and inspections performed by Atlantic Crane Inspection Services, but are not intended to replace or supersede the necessity for routine or preventative maintenance procedures recommended by others, such as, but not limited to: manufacturers, operators, and other inspecting organizations. Referral to applicable regulation is essential with regard to responsibilities of owners and users for use, maintenance, and normal operational inspections. It is especially important that owners and users, regularly and by means of extraordinary disassembly and/or non-destructive testing arrange to effectively examine parts of the equipment which may be reasonably accessible by routine examinations, including such examinations by Atlantic Crane Inspection Services.

Equipment owners and users should assure continuous compliance with all manufacturer's specifications, including, but not limited to: full range accuracy of load indicating devices, machinery, etc. regardless of the extent to which specifications can be evaluated during Atlantic Crane Inspection Services.

Other requirements of applicable Federal and State regulations not specifically considered with the scope of recorded by related Atlantic Crane Inspections Services' reports, remain for the continuing attention and responsibility of equipment owner and users, including, but not limited to: adequate lighting, walkways, ladders, stairways, clearance between moving and fixed structures, electrical motor restart lockouts, fire extinguishers in the vicinity, etc.



Atlantic Crane Inspection Services
P.O. Box 747
Bensalem, PA 19020
(215) 639-2579

Inspection
K&H Reclamation LLC

FolderID: 12371
FormID: 17231686



Hydraulic Boom Crane Inspection Report
(1910.180 & 1926.1400-1926.1441 as necessary)

Completed by: Brian McMahon on 07/06/2023

Location:	USA
Serial #:	092 679
Unit #:	S 175

Manufacturer:	Liebherr
Model:	LTM 1100-5.2
Capacity:	120 Tons
Length/Lift:	171'
Type of Crane:	Truck Crane (1910.180 & 1926.1400)
Number of Hoists:	Main & Auxiliary (Not in Use)
Boom Configuration:	Main Boom w/o Attached Jib

Priorities Found: ● 1 - Low ● 95 - Good

Location of Equipment

1. Location of Equipment **2900 Black Lake Pl, Philadelphia, PA**

Customer Sign Off

2. Customer Sign Off

IF THERE ARE NO DEFICIENCIES NOTHING NEEDS TO BE DONE.

IF THERE ARE ANY HIGH, RED, DEFICIENCIES PLEASE FOLLOW THE BELOW INSTRUCTIONS

The deficiencies marked HIGH in RED shall be corrected and this report must be dated, signed and email THIS PAGE ONLY to either jaime@atlanticcrane.com or gina@atlanticcrane.com or fax THIS PAGE ONLY to our office at 215-639-2316 and a certification and sticker will be issued. The above deficiencies denoted with (REC, MEDIUM, ORANGE) are recommended and are not required to be corrected to achieve certification. However, those items should be corrected to improve equipment reliability and safety.

The undersigned verifies the listed deficiencies denoted with an (DEF, HIGH, RED) have been corrected.

Signature

Date

Inspection Information

3. Inspection Number	23070601BM
4. Inspection Date	07/06/2023
● 5. Inspection Type	(Ann) Annual

Information & Records

● 6. Documentation of Annual / Comprehensive Inspection	(SAT) Satisfactory
● 7. Record of Maintenance on file with owner	(SAT) Satisfactory
● 8. Hand Signal Chart	(SAT) Satisfactory
● 9. Safety and Warning Labels	(SAT) Satisfactory
● 10. Operator's Manual	(SAT) Satisfactory

Safety Devices / Operational Aids

Atlantic Crane Inspection Services disclaims all warranties, both express and implied, relating to the information, reports, opinions and analysis disclosed to the Customer by Atlantic Crane Inspection Services. Atlantic Crane Inspection Services shall not be liable for any errors or omissions, or any losses, injury or damages arising from the use of such information, reports, opinions and analysis by the Customer.

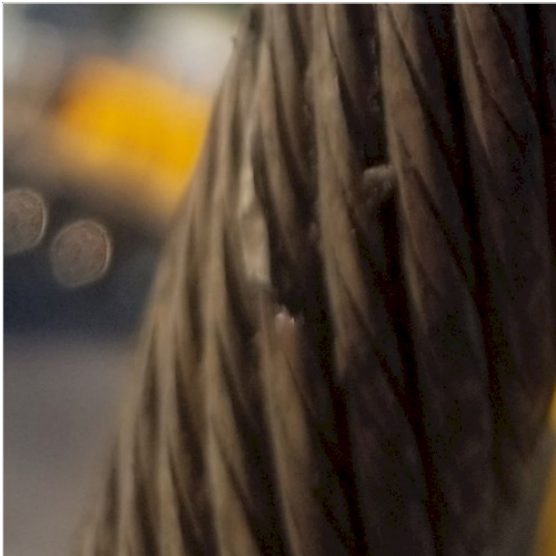
● 11. Audible Reverse Signal Alarm	(SAT) Satisfactory
● 12. Audible Warning Device	(SAT) Satisfactory
● 13. Boom Angle Indicator	(SAT) Satisfactory
● 14. Boom Length Indicator	(SAT) Satisfactory
● 15. Drum Rotation Indicator	(SAT) Satisfactory
● 16. Two-Block System	(SAT) Satisfactory
● 17. Load Moment Indicator	(SAT) Satisfactory
● 18. Load Weight Indicator	(SAT) Satisfactory
● 19. Level Indicator	(SAT) Satisfactory
● 20. Fire Extinguisher	(SAT) Satisfactory
Load Chart	
● 21. Load Chart	(SAT) Satisfactory
● 22. Per Configuration	(SAT) Satisfactory
● 23. Visible from Fixed Operator's Station	(SAT) Satisfactory
Carrier	
● 24. Steering	(SAT) Satisfactory
● 25. Parking Brake	(SAT) Satisfactory
● 26. External Lights (Headlights, Taillights, Brake Lights)	(SAT) Satisfactory
● 27. Windshield Wipers	(SAT) Satisfactory
● 28. Windows / Mirrors	(SAT) Satisfactory
● 29. Wheels/Tires	(SAT) Satisfactory
● 30. Engine Performance	(SAT) Satisfactory
● 31. Exhaust System	(SAT) Satisfactory
● 32. Drive Line	(SAT) Satisfactory
● 33. Main Frame Members	(SAT) Satisfactory
● 34. Hydraulic Hoses, Fittings, Tubes	(SAT) Satisfactory
● 35. Hydraulic Fluid Level	(SAT) Satisfactory
● 36. Hoses / Tubing / Fittings .	(SAT) Satisfactory
● 37. Slip Resistant Walking surface	(SAT) Satisfactory
Outriggers	
● 38. Boxes & Beams	(SAT) Satisfactory
● 39. Hydraulic Cylinders	(SAT) Satisfactory
● 40. Pad / Float	(SAT) Satisfactory
● 41. Hoses / Tubing / Fittings	(SAT) Satisfactory
● 42. Holding Valves	(SAT) Satisfactory
● 43. Caution / Warning Signs	(SAT) Satisfactory
Operator's Station	
● 44. Windows/Wipers	(SAT) Satisfactory
● 45. Cab Door Restraint	(SAT) Satisfactory
● 46. Cab Access	(SAT) Satisfactory
● 47. Steps / Ladders / Handrails	(SAT) Satisfactory
● 48. Anti-Skid Stepping Surfaces	(SAT) Satisfactory
● 49. Fire Extinguisher	(SAT) Satisfactory
● 50. Electrocutation Warning Sign(s)	(SAT) Satisfactory
● 51. Horn	(SAT) Satisfactory
● 52. Controls Identified	(SAT) Satisfactory
● 53. Control Functions	(SAT) Satisfactory

Atlantic Crane Inspection Services disclaims all warranties, both express and implied, relating to the information, reports, opinions and analysis disclosed to the Customer by Atlantic Crane Inspection Services. Atlantic Crane Inspection Services shall not be liable for any errors or omissions, or any losses, injury or damages arising from the use of such information, reports, opinions and analysis by the Customer.

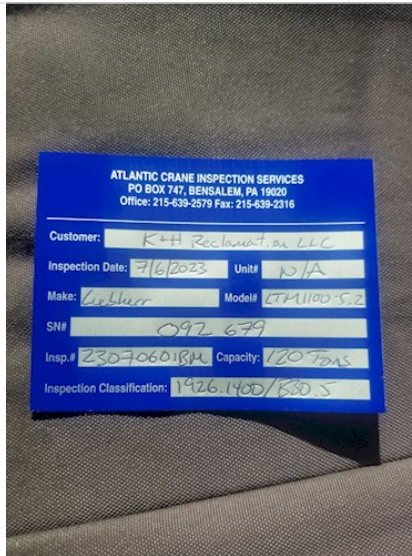
●	54. Power Plant Controls	(SAT) Satisfactory
●	55. Operator Cutoff (Deadman) Switch	(SAT) Satisfactory
Rotating Upper Structure		
●	56. Engine Performance	(SAT) Satisfactory
●	57. Exhaust System/Guards & Insulators	(SAT) Satisfactory
●	58. Hoses	(SAT) Satisfactory
●	59. Counterweight Frame	(SAT) Satisfactory
●	60. Ring and Pinion Gear	(SAT) Satisfactory
●	61. Hydraulic and Pneumatic Pumps	(SAT) Satisfactory
●	62. Hydraulic Tubes, Fitting, and Hoses	(SAT) Satisfactory
●	63. Hydraulic Pressure	(SAT) Satisfactory
●	64. Electrical Wiring	(SAT) Satisfactory
●	65. Swing System / Assembly	(SAT) Satisfactory
●	66. Counterweight Mounting	(SAT) Satisfactory
●	67. Counterweight Posted Warnings	(SAT) Satisfactory
●	68. Electrocutation Posted Warnings	(SAT) Satisfactory
●	69. Structure	(SAT) Satisfactory
Hoist System		
●	70. Brakes and Clutch System	(SAT) Satisfactory
●	71. Wire Rope Reeving	(SAT) Satisfactory
●	72. 2 Rope Wrap Minimum	(SAT) Satisfactory
●	73. Motor	(SAT) Satisfactory
●	74. Drums/Lagging/Flanges	(SAT) Satisfactory
●	75. Anchor System	(SAT) Satisfactory
●	76. Hoist Spooling	(SAT) Satisfactory
Main Boom		
●	77. Lift Cylinder(s)	(SAT) Satisfactory
●	78. Telescoping Boom Cylinder(s)	(SAT) Satisfactory
●	79. Hydraulic Hoses, Tubes, and Fittings	(SAT) Satisfactory
●	80. Holding Device	(SAT) Satisfactory
●	81. Boom Sections Alignment	(SAT) Satisfactory
●	82. Wear Pads	(SAT) Satisfactory
●	83. Sheaves	(SAT) Satisfactory
●	84. Boom Hinge Pin	(SAT) Satisfactory
●	85. Boom Head Section	(SAT) Satisfactory
●	86. Structure	(SAT) Satisfactory
Main Drum Wire Rope		
	87. Diameter and wear	
	Size	Construction
	21 mm	RR LLL
		Number of Parts of Line
		2
●	88. Rope Damage	(MON) Yes, monitor condition monthly
	1 random broken wire	
●	89. Lubrication	(SAT) Satisfactory
●	90. End Connectors	(SAT) Satisfactory
Main Hoist Load Block/Ball & Hook		

Atlantic Crane Inspection Services disclaims all warranties, both express and implied, relating to the information, reports, opinions and analysis disclosed to the Customer by Atlantic Crane Inspection Services. Atlantic Crane Inspection Services shall not be liable for any errors or omissions, or any losses, injury or damages arising from the use of such information, reports, opinions and analysis by the Customer.

91. Capacity & Weight		
Capacity	Weight	
30 Tons	450 kg / 990 lbs	
● 92. Capacity Marking		(SAT) Satisfactory
● 93. Weight Marking		(SAT) Satisfactory
● 94. Sheave(s)		(SAT) Satisfactory
● 95. Safety Latch(es)		(SAT) Satisfactory
● 96. 0° Hook Bend or Twist		(SAT) Satisfactory
● 97. 5% Hook Opening or 1/4" Max		(SAT) Satisfactory
● 98. 10% Hook Wear Max		(SAT) Satisfactory
● 99. Bearing		(SAT) Satisfactory
● 100. Wedge Socket / End Fitting		(SAT) Satisfactory
● 101. Reeving		(SAT) Satisfactory
Verification and Completion		
102. Inspector Name and Signature		Brian C McMahon
		
		
● 103. Sticker Given		(Y) Yes, Given on Site P110



P93.1



P110.2

Atlantic Crane Inspection Services disclaims all warranties, both express and implied, relating to the information, reports, opinions and analysis disclosed to the Customer by Atlantic Crane Inspection Services. Atlantic Crane Inspection Services shall not be liable for any errors or omissions, or any losses, injury or damages arising from the use of such information, reports, opinions and analysis by the Customer.

