



Below the Hook Lifting Devices
 Sautter Crane Rental

FolderID: 11974
 FormID: 16400315



Below the Hook Devices
 Completed by: **Matt Hottenstein on 04/03/2023**
 Location: USA
 Serial Number: 9861
 Unit #: MB-6

Type: Manbasket (1926.1431)
 Manufacturer: Koke Inc
 Capacity: 1000 lbs
 Net Weight: 600 lbs
 Rigging Attached : Yes
 Work Performed: Inspection

Priorities Found: ● 2 - High ● 1 - Medium ● 14 - Good

Location of Equipment

1. Location of Equipment **Philadelphia PA Yard**

Customer Sign Off

2. Customer Sign Off

IF THERE ARE NO DEFICIENCIES NOTHING NEEDS TO BE DONE.

IF THERE ARE ANY HIGH, RED, DEFICIENCIES PLEASE FOLLOW THE BELOW INSTRUCTIONS

The deficiencies marked HIGH in RED shall be corrected and this report must be dated, signed and email THIS PAGE ONLY to either jaim@atlanticcrane.com or gina@atlanticcrane.com or fax THIS PAGE ONLY to our office at 215-639-2316 and a certification and sticker will be issued. The above deficiencies denoted with (REC, MEDIUM, ORANGE) are recommended and are not required to be corrected to achieve certification. However, those items should be corrected to improve equipment reliability and safety.

The undersigned verifies the listed deficiencies denoted with an (DEF, HIGH, RED) have been corrected.

 Signature

 Date

Inspection Information


3. Inspection Number **23040302MH**
 4. Inspection Date **04/03/2023**
 ● 5. Inspection Type **(Ann) Annual**

Manbasket

6. Max Persons		
● 7. Rating Plate	(SAT) Satisfactory	
● 8. Grab Rail	(SAT) Satisfactory	
● 9. Access Gate	(SAT) Satisfactory	
● 10. Access Gate Lock	(SAT) Satisfactory	
● 11. Headroom	(SAT) Satisfactory	
● 12. Edge & Surfaces	(SAT) Satisfactory	
● 13. Welds	(SAT) Satisfactory	
● 14. Lifting Eyes	(DEF) Deficiency	P14

☐ *Plates bent*

Atlantic Crane Inspection Services disclaims all warranties, both express and implied, relating to the information, reports, opinions and analysis disclosed to the Customer by Atlantic Crane Inspection Services. Atlantic Crane Inspection Services shall not be liable for any errors or omissions, or any losses, injury or damages arising from the use of such information, reports, opinions and analysis by the Customer.

● 15. Lanyard Attachment Points			(SAT) Satisfactory	
● 16. Toe Board & Mid Rail			(SAT) Satisfactory	
● 17. Overhead Protection			(DEF) Deficiency	P17
☐ holes in mesh roof				
● 18. Mesh Walling			(REC) Recommendation	P18
☐ starting to come off at base				
● 19. Hand Signal Chart			(SAT) Satisfactory	
Rigging				
20. Wire Rope Information				P21
Size	Overall Capacity		Number of Legs	
1/2"	8.8 ton		5	
● 21. Wire Rope Condition			(SAT) Satisfactory	
22. Shackle Information				
Size	Capacity		Number of Shackles	
3/4"	4.75 ton		5	
● 23. Shackle Condition			(SAT) Satisfactory	
24. Ring Link Information				
Size	Capacity			
● 25. Ring Link Condition			(SAT) Satisfactory	
Verification and Completion				
26. Inspector Name & Signature				
27. Additional Inspection Notes	<i>No other visible deficiencies found at time of inspection</i>			



P14.1

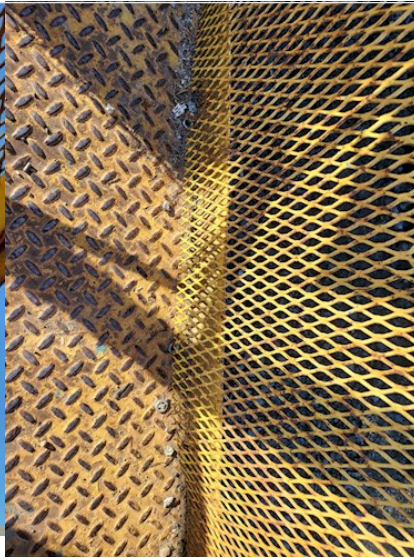


P14.2

Atlantic Crane Inspection Services disclaims all warranties, both express and implied, relating to the information, reports, opinions and analysis disclosed to the Customer by Atlantic Crane Inspection Services. Atlantic Crane Inspection Services shall not be liable for any errors or omissions, or any losses, injury or damages arising from the use of such information, reports, opinions and analysis by the Customer.



P17.3



P18.4



P21.5