



Prepared for:

## **Sautter Crane rental**

2900 Black Lake Place Philadelphia, PA 19154

100 Stellarator Rd. Princeton NJ.

on

9/19/2025

Please return the entire report.

**Customer Sign Off**

**-If there are no deficiencies nothing needs to be done**

**-If there are any (HIGH, RED) deficiencies please follow the instructions below**

The deficiencies marked HIGH in RED shall be corrected and this report must be dated, signed and email THIS ENTIRE REPORT to [tony.rossi@tandemlift.com](mailto:tony.rossi@tandemlift.com) or [jon.santimaw@tandemlift.com](mailto:jon.santimaw@tandemlift.com). After the signed document is received, a certification and label will be issued. The deficiencies denoted with (REC, MEDIUM, ORANGE) are recommended and are not required to be corrected to achieve certification. However those items should be corrected to improve equipment reliability and performance.

-The undersigned verifies that the deficiencies denoted with (DEF, HIGH, RED) have been corrected.




---

Signature

---


Date

# Table of Contents


	 High	 Med	 Low	Section
Inspection - 100 Stellarator Rd. Princeton NJ.				
Lattice Boom Crane: 11001111 - S229	0	0	0	<b>1.0</b>

# Overview




## Breakdown by Form

Form Type	 High	 Med	 Low	# Forms
Inspection	0	0	0	1
Overall:	0	0	0	1

## Breakdown by Location

Location	 High	 Med	 Low	# Forms
100 Stellarator Rd. Princeton NJ.	0	0	0	1
Overall:	0	0	0	1

## Breakdown by Asset

Asset Type	 High	 Med	 Low	# Assets
Lattice Boom Crane	0	0	0	1
Overall:	0	0	0	1



Tandem Lift LLC  
321 Enlow Place  
Pennsville, NJ 08070  
833-TANDEM1

## Inspection

**Sautter Crane rental**  
2900 Black Lake Place  
Philadelphia, PA 19154

FolderID: 091925S229  
FormID: 25924138



### Lattice Boom Crane

**Completed by: Steve Edling on 09/19/2025**

**Location:** 100 Stellarator Rd. Princeton NJ.  
**Serial #:** 11001111  
**TagID:** S229  
**Status:** In Service

**Manufacturer:** Manitowoc  
**Model:** 10000A-1  
**Capacity:** 100 Tons  
**Length/Lift:** 160 ft main 30 ft jib  
**Hook Type:** Overhaul Ball & Hook  
**Hook Type 2:** N/A

Priorities Found: ● 114 - Good

### Miles and Hours

1. Miles	0 Miles
2. Hours	7363.4 Hours

### Historical Records

● 3. Monthly Inspection	(SAT) Satisfactory
● 4. Documentation of Annual / Comprehensive Inspection	(SAT) Satisfactory
● 5. Equipment Modification(s) or additions	(SAT) Satisfactory
● 6. Record of Maintenance	(SAT) Satisfactory
● 7. Record of Load Test	(NA) Not Applicable

### General

● 8. Sheet Metal	(SAT) Satisfactory	
● 9. Covers and Guards	(SAT) Satisfactory	
● 10. External Lights	(SAT) Satisfactory	
● 11. Housekeeping	(SAT) Satisfactory	
● 12. Safety and Warning Labels	(SAT) Satisfactory	
● 13. Hand Signal Chart	(SAT) Satisfactory	P13

### Crawler Assembly

● 49. Car body/ Side frames	(SAT) Satisfactory
● 50. Chain, idlers and Sprocket	(SAT) Satisfactory
● 51. Track Pads, and Pins	(SAT) Satisfactory
● 52. Travel Steering, Brakes, and Locking Devices	(SAT) Satisfactory
● 53. Steering Clutches	(NA) Not Applicable

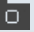

### Operator's Station

● 54. Steps / Ladders / Handrails	(SAT) Satisfactory
● 55. Anti-Skid Stepping Surfaces	(SAT) Satisfactory
● 56. Windows	(SAT) Satisfactory
● 57. Windshield Wipers	(SAT) Satisfactory

Tandem Lift LLC disclaims all warranties, both express and implied, relating to the information, reports, opinions and analysis disclosed to the Customer by Tandem Lift LLC. Tandem Lift LLC shall not be liable for any errors or omissions, or any losses, injury or damages arising from the use of such information, reports, opinions and analysis by the Customer.

● 58. Cab Door Restraint	(SAT) Satisfactory	
● 59. Fire Extinguisher	(SAT) Satisfactory	
● 60. Mirrors	(SAT) Satisfactory	
● 61. Seat	(SAT) Satisfactory	
● 62. Seatbelts	(SAT) Satisfactory	
● 63. Operator's Manual	(SAT) Satisfactory	
● 64. Decals	(SAT) Satisfactory	P64
● 65. Electrocution Warning Sign(inside the cab)	(SAT) Satisfactory	P65
● 66. Hand Signal Charts	(SAT) Satisfactory	P66
● 67. Swing Brake	(SAT) Satisfactory	
● 68. Positive Swing lock	(SAT) Satisfactory	
● 69. Control Function	(SAT) Satisfactory	
● 70. Air Pressure	(NA) Not Applicable	
● 71. Performance Indicators (Pressure)	(SAT) Satisfactory	
● 72. Posted Warnings	(SAT) Satisfactory	
● 73. Brake and Clutch	(NA) Not Applicable	
● 74. Accelerator / Throttle	(SAT) Satisfactory	
● 75. Foot Brakes, Latches, and Linkage	(SAT) Satisfactory	
<b>Load Chart</b>		
● 76. Ground Level, Remotely Controlled	(NA) Not Applicable	
● 77. Per Configuration	(SAT) Satisfactory	
● 78. Visible from Fixed Operator's Station	(SAT) Satisfactory	
● 79. Durable / Legible/ Secured	(SAT) Satisfactory	
<b>Safety Devices / Operational Aids</b>		
● 80. Horn	(SAT) Satisfactory	
● 81. Boom Angle Indicator	(SAT) Satisfactory	
● 82. Main Drum rotation indicator	(SAT) Satisfactory	
● 83. Auxiliary Drum rotation indicator	(NA) Not Applicable	
● 84. Radius Indicator	(SAT) Satisfactory	
● 85. Crane Level Indicator	(SAT) Satisfactory	
● 86. Two-Block System	(SAT) Satisfactory	
● 87. Boom Hoist Limiting Device	(SAT) Satisfactory	
● 88. Boom Hoist Ratchet and Pawl	(SAT) Satisfactory	
● 89. Outrigger / Stabilizer Position Sensor	(NA) Not Applicable	
● 90. Luffing Jib Angle Indicator	(NA) Not Applicable	
<b>Upper Power Plant</b>		
● 91. Performance	(SAT) Satisfactory	
● 92. Exhaust System/Guards & Insulators	(SAT) Satisfactory	
● 93. Hoses	(SAT) Satisfactory	
● 94. Reciprocating and rotating parts	(SAT) Satisfactory	
<b>Rotating Upper Structure</b>		
● 95. Turntable / Bearing	(SAT) Satisfactory	
● 96. Turntable / Rollers	(NA) Not Applicable	
● 97. Ring and Pinion Gear	(SAT) Satisfactory	
● 98. Ring and Pinion Gear.	(SAT) Satisfactory	
● 99. Hydraulic and Pneumatic Pumps	(SAT) Satisfactory	
● 100. Hydraulic Tubes, Fitting, and Hoses	(SAT) Satisfactory	
● 101. Hydraulic Pressure	(SAT) Satisfactory	
● 102. Electrical Wiring	(SAT) Satisfactory	


Tandem Lift LLC disclaims all warranties, both express and implied, relating to the information, reports, opinions and analysis disclosed to the Customer by Tandem Lift LLC. Tandem Lift LLC shall not be liable for any errors or omissions, or any losses, injury or damages arising from the use of such information, reports, opinions and analysis by the Customer.

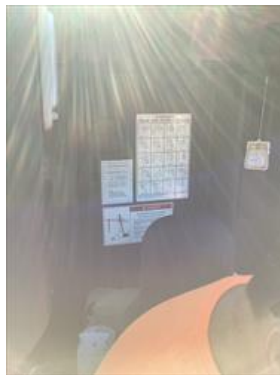
● 103. Main Hoist - Brakes and Clutch System	(SAT) Satisfactory	
● 104. Main Hoist - Wire Rope Reeving	(NA) Not Applicable	
● 105. Main Hoist - Meets 2 rope wrap minimum	(SAT) Satisfactory	
● 106. Auxiliary Hoist - Brakes and Clutch System	(NA) Not Applicable	
● 107. Auxiliary Hoist - Wire Rope Reeving	(NA) Not Applicable	
● 108. Auxiliary Hoist - Meets 2 rope wrap minimum	(NA) Not Applicable	
● 109. Boom Hoist - Brakes and Clutch System	(SAT) Satisfactory	
● 110. Boom Hoist - Wire Rope Reeving	(SAT) Satisfactory	P110
● 111. Boom Hoist - Meets 2 rope wrap minimum	(SAT) Satisfactory	P111
● 112. Swing System / Assembly	(SAT) Satisfactory	
● 113. Hydraulic and Pneumatic Pumps and Motors	(SAT) Satisfactory	
● 114. Drums and Flanges	(SAT) Satisfactory	
● 115. Clutch and Brake Protection	(NA) Not Applicable	
● 116. Torque Converter	(NA) Not Applicable	
● 117. Slip resistant walking and stepping surfaces	(SAT) Satisfactory	
● 118. Steps, Grab rails, and platforms	(SAT) Satisfactory	
● 119. Access to Cab and Roof	(SAT) Satisfactory	
● 120. Air System	(NA) Not Applicable	
● 121. Counterweight Mounting	(SAT) Satisfactory	
● 122. Counterweight Warnings Signs	(SAT) Satisfactory	
● 123. Electrocution Warnings Signs	(SAT) Satisfactory	P123
<b>Boom Support System</b>		
● 124. Gantry and Mast	(SAT) Satisfactory	P124
● 125. Boom Stops	(SAT) Satisfactory	
● 126. Inner Bail	(SAT) Satisfactory	P126
● 127. Outer Bail and Equalizer	(SAT) Satisfactory	P127
● 128. Sheaves	(SAT) Satisfactory	
● 129. Boom Hoist Wire Rope Reeving	(SAT) Satisfactory	
<b>Boom</b>		
● 130. Boom Section Identification	(SAT) Satisfactory	P130
● 131. Boom Section Sequence	(SAT) Satisfactory	
● 132. Boom Section Alignment	(SAT) Satisfactory	
● 133. Warning Labels and Decals	(SAT) Satisfactory	P133
● 134. Spreader Bar	(NA) Not Applicable	
● 135. Sheaves	(SAT) Satisfactory	
● 136. Boom Head Section	(SAT) Satisfactory	P136
● 137. Auxiliary Boom Head	(NA) Not Applicable	
● 138. Lattice Members	(SAT) Satisfactory	
● 139. Cord Members	(SAT) Satisfactory	
● 140. End Connections/Pins	(SAT) Satisfactory	
● 141. Boom Foot Pins and Keepers	(SAT) Satisfactory	
● 142. Hoist Line Dead End	(SAT) Satisfactory	
● 143. Wire Rope Retainers	(SAT) Satisfactory	
<b>Jib</b>		
● 144. Sheaves	(SAT) Satisfactory	
● 145. Wire Rope Retainers	(SAT) Satisfactory	
● 146. Lattice Members	(SAT) Satisfactory	
● 147. Cord Members	(SAT) Satisfactory	
● 148. End Connections and Pins	(SAT) Satisfactory	

Tandem Lift LLC disclaims all warranties, both express and implied, relating to the information, reports, opinions and analysis disclosed to the Customer by Tandem Lift LLC. Tandem Lift LLC shall not be liable for any errors or omissions, or any losses, injury or damages arising from the use of such information, reports, opinions and analysis by the Customer.

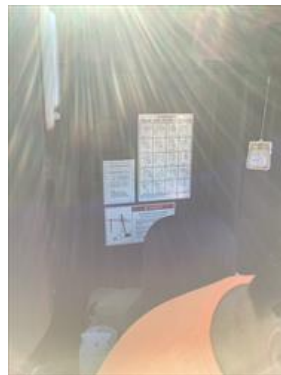
● 149. Jib Stops	(SAT) Satisfactory
<b>Wire Rope Main Hoist drum</b>	
● 183. Rope Damage	(SAT) Satisfactory
■ 1 part	
184. Diameter & Wear	
Size:	Diameter & Wear
26 mm	26.4 mm
● 185. Broken Wires	(SAT) Satisfactory
● 186. Lubrication	(SAT) Satisfactory
● 187. End Connectors	(SAT) Satisfactory
● 188. End Connectors, Pins, Keepers	(SAT) Satisfactory
<b>Wire rope Auxiliary Drum 1</b>	
● 189. Rope Damage	(NA) Not Applicable
190. Diameter & Wear	
Size	Diameter / wear
0	0
● 191. Broken Wires	(NA) Not Applicable
● 192. Lubrication	(NA) Not Applicable
● 193. End Connectors	(NA) Not Applicable
<b>Wire rope Auxiliary Drum 2</b>	
● 194. Rope Damage	(NA) Not Applicable
195. Diameter & Wear	
Size	Diameter & Wear
0	0
● 196. Broken Wires	(NA) Not Applicable
● 197. Lubrication	(NA) Not Applicable
● 198. End Connectors	(NA) Not Applicable
<b>Wire rope Auxiliary drum 3</b>	
● 199. Rope Damage	(NA) Not Applicable
● 200. Measured Wear.	(NA) Not Applicable
201. Diameter & Wear	
Size:	Diameter & Wear
0	0
● 202. Broken Wires	(NA) Not Applicable
● 203. Lubrication	(NA) Not Applicable
● 204. End Connectors	(NA) Not Applicable
<b>Wire rope Boom Hoist Drum</b>	
● 205. Rope Damage	(SAT) Satisfactory
206. Diameter & Wear	
Size:	Diameter & Wear:
16 mm	16.2 mm
● 207. Broken Wires	(SAT) Satisfactory
● 208. Lubrication	(SAT) Satisfactory
● 209. End Connectors	(SAT) Satisfactory
<b>Pendants &amp; End connections</b>	
● 210. Rope Damage.	(SAT) Satisfactory



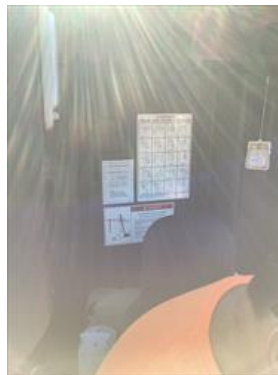
211. Diameter & Wear	
Size:	Diameter & Wear
1 3/16 inch	1 3/16 inch
<b>Overhaul Ball &amp; Hook</b>	
● 223. Capacity Marking Paint marker	(SAT) Satisfactory
● 224. Weight Marking Paint marker	(SAT) Satisfactory
● 225. Safety Latches	(SAT) Satisfactory
● 226. 0° Hook Bend or Twist	(SAT) Satisfactory
● 227. 5% Hook Opening or 1/4" Max	(SAT) Satisfactory
● 228. 10% Hook Wear Max	(SAT) Satisfactory
● 229. Swivel / Bearing	(SAT) Satisfactory
● 230. Wedge Socket / End Fitting	(SAT) Satisfactory
<b>No-Load Operational Test</b>	
● 231. No-Load Operational Test	(SAT) Satisfactory
<b>Verification and Completion</b>	
232. Inspector Name and Signature	Steven Edling
	
233. Date of Inspection	09/19/2025
234. Customer Name and Signature	
● 235. Certificate Issued	(Y) Yes P235



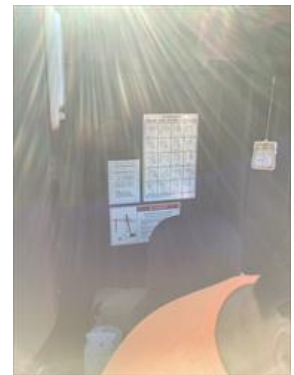
P13.1



P64.2



P65.3



P66.4



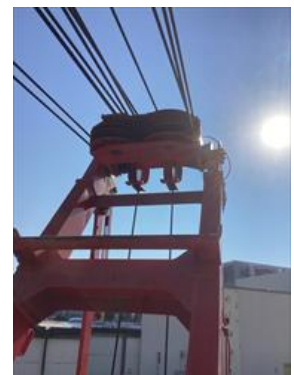
P110.5



P111.6



P123.7



P124.8



P126.9



P127.10



P130.11



P133.12



P136.13



P235.14

# CERTIFICATE OF INSPECTION

ACCOUNT: Sautter Crane rental

FOLDER #: 091925S229

ADDRESS: 2900 Black Lake Place - Philadelphia, PA 19154

SERIAL #: 11001111

LOCATION: 100 Stellarator Rd. Princeton NJ.

TagID: S229

AREA:

DESC:

MANUFACTURER

Manitowoc

MODEL

10000A-1

CAPACITY

100 Tons

LENGTH/LIFT

160 ft main 30 ft jib

HOOK TYPE

Overhaul Ball & Hook

HOOK TYPE 2

N/A

INSPECTOR: Steve Edling

DATE: 9/19/2025

NOTES / COMMENTS:

Tandem Lift LLC disclaims all warranties, both express and implied, relating to the information, reports, opinions and analysis disclosed to the Customer by Tandem Lift LLC. Tandem Lift LLC shall not be liable for any errors or omissions, or any losses, injury or damages arising from the use of such information, reports, opinions and analysis by the Customer.