



Prepared for:

**Sautter Crane Rental**

on

7/15/2023

# DISCLAIMER

Inspection reports are based upon observed procedures and inspections performed by Atlantic Crane Inspection Services, but are not intended to replace or supersede the necessity for routine or preventative maintenance procedures recommended by others, such as, but not limited to: manufacturers, operators, and other inspecting organizations. Referral to applicable regulation is essential with regard to responsibilities of owners and users for use, maintenance, and normal operational inspections. It is especially important that owners and users, regularly and by means of extraordinary disassembly and/or non-destructive testing arrange to effectively examine parts of the equipment which may be reasonably accessible by routine examinations, including such examinations by Atlantic Crane Inspection Services.

Equipment owners and users should assure continuous compliance with all manufacturer's specifications, including, but not limited to: full range accuracy of load indicating devices, machinery, etc. regardless of the extent to which specifications can be evaluated during Atlantic Crane Inspection Services.

Other requirements of applicable Federal and State regulations not specifically considered with the scope of recorded by related Atlantic Crane Inspections Services' reports, remain for the continuing attention and responsibility of equipment owner and users, including, but not limited to: adequate lighting, walkways, ladders, stairways, clearance between moving and fixed structures, electrical motor restart lockouts, fire extinguishers in the vicinity, etc.



**Inspection**  
**Sautter Crane Rental**

FolderID: 12411  
 FormID: 17321079



**Lattice Boom Crane Inspection Report**  
**(1910.180 & 1926.1400-1926.1441 as necessary)**

**Completed by: Brian McMahon on 07/15/2023**

Location:	USA
Serial #:	7771161
Unit #:	S184

Manufacturer:	Manitowoc
Model:	777
Capacity:	200 Tons
Length:	140 ft
Type of Crane:	Crawler Lattice (1910.180 & 1926.1400)
Number of Lifting Hoist:	Main & Auxiliary
Boom Hoist Setup:	Cylinder System
Jib:	No Jib

Priorities Found: ● 1 - Low ● 110 - Good

**Location of Equipment**

1. Location of Equipment **120 Belmont Dr, Somerset, NJ**

**Customer Sign Off**

2. Customer Sign Off

*IF THERE ARE NO DEFICIENCIES NOTHING NEEDS TO BE DONE.*

*IF THERE ARE ANY HIGH, RED, DEFICIENCIES PLEASE FOLLOW THE BELOW INSTRUCTIONS*

*The deficiencies marked HIGH in RED shall be corrected and this report must be dated, signed and email THIS PAGE ONLY to either [jaim@atlanticcrane.com](mailto:jaim@atlanticcrane.com) or [gina@atlanticcrane.com](mailto:gina@atlanticcrane.com) or fax THIS PAGE ONLY to our office at 215-639-2316 and a certification and sticker will be issued. The above deficiencies denoted with (REC, MEDIUM, ORANGE) are recommended and are not required to be corrected to achieve certification. However, those items should be corrected to improve equipment reliability and safety.*

*The undersigned verifies the listed deficiencies denoted with an (DEF, HIGH, RED) have been corrected.*

\_\_\_\_\_  
 Signature

\_\_\_\_\_  
 Date

**Inspection Information**

3. Inspection Number	<b>23071501BM</b>
4. Inspection Date	<b>07/15/2023</b>
● 5. Inspection Type	<b>(Ann) Annual</b>

**Information & Records**

● 6. Documentation of Annual / Comprehensive Inspection	<b>(SAT) Satisfactory</b>
● 7. Monthly Inspection	<b>(SAT) Satisfactory</b>
● 8. Record of Maintenance	<b>(SAT) Satisfactory</b>
● 9. Hand Signal Chart	<b>(SAT) Satisfactory</b>
● 10. Safety and Warning Labels	<b>(SAT) Satisfactory</b>
● 11. Operator's Manual	<b>(SAT) Satisfactory</b>

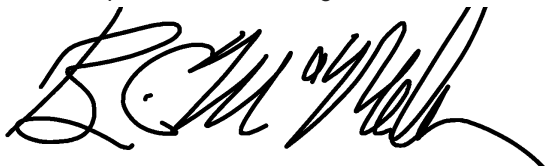
Atlantic Crane Inspection Services disclaims all warranties, both express and implied, relating to the information, reports, opinions and analysis disclosed to the Customer by Atlantic Crane Inspection Services. Atlantic Crane Inspection Services shall not be liable for any errors or omissions, or any losses, injury or damages arising from the use of such information, reports, opinions and analysis by the Customer.

Safety Devices / Operational Aids		
●	12. Audible Reverse Signal Alarm	(SAT) Satisfactory
●	13. Boom Angle Indicator	(SAT) Satisfactory
●	14. Drum rotation indicator	(SAT) Satisfactory
●	15. Two-Block System	(SAT) Satisfactory
●	16. Radius Indicator	(SAT) Satisfactory
●	17. Load Moment Indicator	(SAT) Satisfactory
●	18. Crane Level Indicator	(SAT) Satisfactory
●	19. Boom Hoist Limiting Device	(SAT) Satisfactory
●	20. Fire Extinguisher	(SAT) Satisfactory
Load Chart		
●	21. Load Chart	(SAT) Satisfactory
●	22. Per Configuration	(SAT) Satisfactory
●	23. Durable / Legible/ Secured	(SAT) Satisfactory
Crawler Assembly		
●	24. Car body/ Side frames	(SAT) Satisfactory
●	25. Chain, idlers and Sprocket	(SAT) Satisfactory
●	26. Track Pads, and Pins	(SAT) Satisfactory
●	27. Travel Steering, Brakes, and Locking Devices	(SAT) Satisfactory
Operator's Station		
●	28. Windows/Wipers	(NOTE) Note
■	<i>crack in glass on cab door. does not impede operator's line of sight.</i>	
●	29. Cab Door Restraint	(SAT) Satisfactory
●	30. Steps / Ladders / Handrails	(SAT) Satisfactory
●	31. Horn	(SAT) Satisfactory
●	32. Anti-Skid Stepping Surfaces	(SAT) Satisfactory
●	33. Mirrors	(SAT) Satisfactory
●	34. Decals	(SAT) Satisfactory
●	35. Electrocutation Warning Sign(inside the cab)	(SAT) Satisfactory
●	36. Swing Brake	(SAT) Satisfactory
●	37. Positive Swing lock	(SAT) Satisfactory
●	38. Control Function	(SAT) Satisfactory
●	39. Performance Indicators (Pressure)	(SAT) Satisfactory
●	40. Posted Warnings	(SAT) Satisfactory
●	41. Brake and Clutch	(SAT) Satisfactory
●	42. Boom Hoist Ratchet and Pawl	(SAT) Satisfactory
●	43. Accelerator / Throttle	(SAT) Satisfactory
●	44. Foot Brakes, Latches, and Linkage	(SAT) Satisfactory
●	45. Operator Cutoff (Deadman) Switch	(SAT) Satisfactory
Rotating Upper Structure		
●	46. Engine	(SAT) Satisfactory
●	47. Oil & Fluid Levels	(SAT) Satisfactory
●	48. Turntable / Bearing	(SAT) Satisfactory
●	49. Ring and Pinion Gear	(SAT) Satisfactory
●	50. Hydraulic and Pneumatic Pumps	(SAT) Satisfactory
●	51. Hydraulic Tubes, Fitting, and Hoses	(SAT) Satisfactory
●	52. Hydraulic Pressure	(SAT) Satisfactory

Atlantic Crane Inspection Services disclaims all warranties, both express and implied, relating to the information, reports, opinions and analysis disclosed to the Customer by Atlantic Crane Inspection Services. Atlantic Crane Inspection Services shall not be liable for any errors or omissions, or any losses, injury or damages arising from the use of such information, reports, opinions and analysis by the Customer.

● 53. Covers and Guards	(SAT) Satisfactory
● 54. Electrical Wiring	(SAT) Satisfactory
● 55. External Lights	(SAT) Satisfactory
● 56. Swing System / Assembly	(SAT) Satisfactory
● 57. Torque Converter	(SAT) Satisfactory
● 58. Slip resistant walking and stepping surfaces	(SAT) Satisfactory
● 59. Steps, Grab rails, and platforms	(SAT) Satisfactory
● 60. Access to Cab and Roof	(SAT) Satisfactory
● 61. Counterweight Mounting	(SAT) Satisfactory
● 62. Counterweight Warnings Signs	(SAT) Satisfactory
● 63. Electrocutation Warnings Signs	(SAT) Satisfactory
● 64. Structure	(SAT) Satisfactory
<b>Hoist System</b>	
● 65. Brakes and Clutch System	(SAT) Satisfactory
● 66. Wire Rope Reeving	(SAT) Satisfactory
● 67. Meets 2 rope wrap minimum	(SAT) Satisfactory
● 68. Motor	(SAT) Satisfactory
● 69. Drums/Lagging/Flanges	(SAT) Satisfactory
● 70. Clutch and Brake Pad Condition	(SAT) Satisfactory
● 71. Anchor System	(SAT) Satisfactory
● 72. Drum Spooling	(SAT) Satisfactory
<b>Boom</b>	
● 73. Gantry and Mast	(SAT) Satisfactory
● 74. Boom Stops	(SAT) Satisfactory
● 75. Boom Section Sequence	(SAT) Satisfactory
● 76. Boom Section Alignment	(SAT) Satisfactory
● 77. Warning Labels and Decals	(SAT) Satisfactory
● 78. Sheaves	(SAT) Satisfactory
● 79. Boom Head Section	(SAT) Satisfactory
● 80. Auxiliary Boom Head	(SAT) Satisfactory
● 81. Lattice Members	(SAT) Satisfactory
● 82. Cord Members	(SAT) Satisfactory
● 83. End Connections/Pins	(SAT) Satisfactory
● 84. Boom Foot Pins and Keepers	(SAT) Satisfactory
● 85. Hoist Line Dead End	(SAT) Satisfactory
● 86. Wire Rope Retainers	(SAT) Satisfactory
● 87. Lift Cylinder	(SAT) Satisfactory
<b>Wire Rope Main Hoist drum</b>	
88. Diameter & Wear	
Size:	Construction
1"	RR RLL
	Number of Parts of Line
	2
● 89. Rope Damage	(SAT) None Visible at Time of inspection
● 90. Lubrication	(SAT) Satisfactory
● 91. End Connectors	(SAT) Satisfactory
<b>Wire rope Auxiliary Drum 1</b>	

Atlantic Crane Inspection Services disclaims all warranties, both express and implied, relating to the information, reports, opinions and analysis disclosed to the Customer by Atlantic Crane Inspection Services. Atlantic Crane Inspection Services shall not be liable for any errors or omissions, or any losses, injury or damages arising from the use of such information, reports, opinions and analysis by the Customer.

92. Diameter & Wear			
Size	Construction	Number of Parts of Line	
1"	RR RLL	2	
● 93. Rope Damage		(SAT) None Visible at Time of inspection	
● 94. Lubrication		(SAT) Satisfactory	
● 95. End Connectors		(SAT) Satisfactory	
<b>Pendants &amp; End connections</b>			
96. Diameter & Wear			
Size:	Construction		
1 1/4"	6x RLL		
● 97. Pendant Damage.		(SAT) Satisfactory	
<b>Main Hoist Load Block/Ball &amp; Hook</b>			
98. Capacity & Weight			P103
Capacity	Weight		
45 Tons	2600 lbs		
● 99. Capacity Marking		(SAT) Satisfactory	
● 100. Weight Marking		(SAT) Satisfactory	
● 101. Sheave(s)		(SAT) Satisfactory	
● 102. Safety Latch(es)		(SAT) Satisfactory	
● 103. 0° Hook Bend or Twist		(SAT) Satisfactory	
● 104. 5% Hook Opening or 1/4" Max		(SAT) Satisfactory	
● 105. 10% Hook Wear Max		(SAT) Satisfactory	
● 106. Swivel		(SAT) Satisfactory	
● 107. Bearing		(SAT) Satisfactory	
● 108. Wedge Socket / End Fitting		(SAT) Satisfactory	
● 109. Reeving		(SAT) Satisfactory	
<b>Auxiliary Hoist Load Block/Ball &amp; Hook</b>			
110. Capacity & Weight			P115
Capacity	Weight		
50 Tons	800 kg / 1760 lbs		
● 111. Capacity Marking		(SAT) Satisfactory	
● 112. Weight Marking		(SAT) Satisfactory	
● 113. Safety Latches		(SAT) Satisfactory	
● 114. 0° Hook Bend or Twist		(SAT) Satisfactory	
● 115. 5% Hook Opening or 1/4" Max		(SAT) Satisfactory	
● 116. 10% Hook Wear Max		(SAT) Satisfactory	
● 117. Swivel / Bearing		(SAT) Satisfactory	
● 118. Wedge Socket / End Fitting		(SAT) Satisfactory	
● 119. Reeving		(SAT) Satisfactory	
<b>Verification and Completion</b>			
120. Inspector Name and Signature		Brian C McMahon	
			

Atlantic Crane Inspection Services disclaims all warranties, both express and implied, relating to the information, reports, opinions and analysis disclosed to the Customer by Atlantic Crane Inspection Services. Atlantic Crane Inspection Services shall not be liable for any errors or omissions, or any losses, injury or damages arising from the use of such information, reports, opinions and analysis by the Customer.

121. Sticker Given

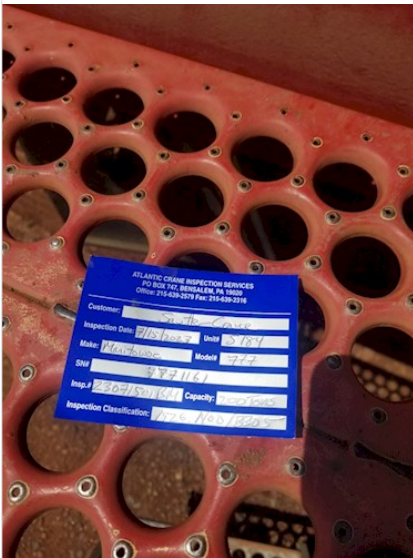
(Y) Yes, Given on Site P127



P103.1



P115.2



P127.3

Atlantic Crane Inspection Services disclaims all warranties, both express and implied, relating to the information, reports, opinions and analysis disclosed to the Customer by Atlantic Crane Inspection Services. Atlantic Crane Inspection Services shall not be liable for any errors or omissions, or any losses, injury or damages arising from the use of such information, reports, opinions and analysis by the Customer.

