



Prepared for:

**Sautter Crane rental**

2900 Black Lake Place Philadelphia, PA 19154

on

10/5/2025

Please return the entire report.

**Customer Sign Off**

**-If there are no deficiencies nothing needs to be done**

**-If there are any (HIGH, RED) deficiencies please follow the instructions below**

The deficiencies marked HIGH in RED shall be corrected and this report must be dated, signed and email THIS ENTIRE REPORT to [tony.rossi@tandemlift.com](mailto:tony.rossi@tandemlift.com) or [jon.santimaw@tandemlift.com](mailto:jon.santimaw@tandemlift.com). After the signed document is received, a certification and label will be issued. The deficiencies denoted with (REC, MEDIUM, ORANGE) are recommended and are not required to be corrected to achieve certification. However those items should be corrected to improve equipment reliability and performance.

-The undersigned verifies that the deficiencies denoted with (DEF, HIGH, RED) have been corrected.




---

Signature

---

Date

# Table of Contents




	 High	 Med	 Low	Section
Inspection - <i>Sautter Yard</i>	0	0	3	<b>1.0</b>

Boom Truck Crane:  
1T914792VDW140744 - S186




Tandem Lift LLC disclaims all warranties, both express and implied, relating to the information, reports, opinions and analysis disclosed to the Customer by Tandem Lift LLC. Tandem Lift LLC shall not be liable for any errors or omissions, or any losses, injury or damages arising from the use of such information, reports, opinions and analysis by the Customer.

# Overview




## Breakdown by Form

Form Type	 High	 Med	 Low	# Forms
Inspection	0	0	3	1
Overall:	0	0	3	1

## Breakdown by Location

Location	 High	 Med	 Low	# Forms
Sautter Yard	0	0	3	1
Overall:	0	0	3	1

## Breakdown by Asset

Asset Type	 High	 Med	 Low	# Assets
Boom Truck Crane	0	0	3	1
Overall:	0	0	3	1

Tandem Lift LLC disclaims all warranties, both express and implied, relating to the information, reports, opinions and analysis disclosed to the Customer by Tandem Lift LLC. Tandem Lift LLC shall not be liable for any errors or omissions, or any losses, injury or damages arising from the use of such information, reports, opinions and analysis by the Customer.



Tandem Lift LLC  
321 Enlow Place  
Pennsville, NJ 08070  
833-TANDEM1

## Inspection

**Sautter Crane rental**  
2900 Black Lake Place  
Philadelphia, PA 19154

FolderID: 100425S186  
FormID: 26111703



### Boom Truck Crane

Completed by: Christopher Volz on 10/05/2025

**Location:** Sautter Yard  
2900 Black Lake Place  
Philadelphia, PA 19154

**Serial #:** 1T914792VDW140744

**TagID:** S186

**Status:** In Service

**Manufacturer:** Terex

**Model Number:** BT4792

**Capacity:** 23 1/2 Tons

**Hook Type :** Load Block & Hook

**Length/Lift:** 92 ft.

Priorities Found: ● 3 - Low ● 98 - Good

### Miles and Hours

1. Miles	83962 Miles
2. Hours	7486 Hours

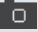

### General

● 3. Guards / Covers	(SAT) Satisfactory
● 4. External Lights	(SAT) Satisfactory
● 5. Warning Decals	(SAT) Satisfactory
● 6. Housekeeping	(SAT) Satisfactory
● 7. Hand Signal Chart	(SAT) Satisfactory

### Driver's Cab

● 12. Glass	(SAT) Satisfactory
● 13. Windshield Wipers	(SAT) Satisfactory
● 14. Mirrors	(SAT) Satisfactory
● 15. Fire Extinguishers	(SAT) Satisfactory
● 16. Seat	(SAT) Satisfactory
● 17. Seat Belt	(SAT) Satisfactory
● 18. Power Take-Off	(SAT) Satisfactory
● 19. Parking Brake	(SAT) Satisfactory
● 20. Air Pressure	(SAT) Satisfactory
● 21. Instruments / Gauges	(SAT) Satisfactory
● 22. Switches / Functions	(SAT) Satisfactory
● 23. Horn	(SAT) Satisfactory
● 24. Steering	(SAT) Satisfactory
● 25. Engine Clutch	(NA) Not Applicable
● 26. Accelerator	(SAT) Satisfactory
● 27. Brake	(SAT) Satisfactory


Tandem Lift LLC disclaims all warranties, both express and implied, relating to the information, reports, opinions and analysis disclosed to the Customer by Tandem Lift LLC. Tandem Lift LLC shall not be liable for any errors or omissions, or any losses, injury or damages arising from the use of such information, reports, opinions and analysis by the Customer.

● 28.	Defroster	(SAT) Satisfactory	
● 29.	Operator's Manual	(SAT) Satisfactory	
<b>Truck Power Plant</b>			
● 30.	Performance	(SAT) Satisfactory	
● 31.	Exhaust System Guards & Insulators	(SAT) Satisfactory	
● 32.	Belts / Hoses	(SAT) Satisfactory	
● 33.	Moving Parts Guards & Covers	(SAT) Satisfactory	
<b>Chassis</b>			
● 34.	Transmission	(SAT) Satisfactory	
● 35.	Driveline	(SAT) Satisfactory	
● 36.	Tires / Wheels	(SAT) Satisfactory	
● 37.	Tire Air Pressure	(SAT) Satisfactory	
● 38.	Chassis Frame Members	(SAT) Satisfactory	
● 39.	Hydraulic Hoses / Tubing / Fittings	(SAT) Satisfactory	
● 40.	Hydraulic Fluid Level	(SAT) Satisfactory	
● 41.	Anti Skid Surface	(SAT) Satisfactory	
● 42.	Guards / Covers	(SAT) Satisfactory	
● 43.	Backup Alarm	(SAT) Satisfactory	
<b>Outriggers / Stabilizers</b>			
● 44.	Boxes	(SAT) Satisfactory	
● 45.	Beams	(MON) Monitor	P45
	 Heavy rust on both rear outriggers		
● 46.	Cylinders	(SAT) Satisfactory	
● 47.	Floats / Pads	(SAT) Satisfactory	
● 48.	Hydraulic Hoses / Tubes / Fittings	(SAT) Satisfactory	
● 49.	Holding Valves	(SAT) Satisfactory	
● 50.	Caution / Warning Signs	(SAT) Satisfactory	
<b>Operators Station</b>			
● 51.	Grab Rails / Steps / Platforms	(SAT) Satisfactory	
● 52.	Door Restraint	(NA) Not Applicable	
● 53.	Windows	(NA) Not Applicable	
● 54.	Anti Skid Surface	(SAT) Satisfactory	
● 55.	Fire Extinguisher	(NA) Not Applicable	
● 56.	Electrocution Warning Sign	(SAT) Satisfactory	
● 57.	Controls Identified	(SAT) Satisfactory	
● 58.	Accelerator / Throttle Control	(SAT) Satisfactory	
● 59.	Horn	(SAT) Satisfactory	
● 60.	Seat	(NA) Not Applicable	
<b>Load Chart</b>			
● 61.	Per Configuration	(SAT) Satisfactory	
● 62.	Durable	(SAT) Satisfactory	
● 63.	Legible	(SAT) Satisfactory	
● 64.	Secured	(SAT) Satisfactory	
● 65.	Visible From Operators Station	(SAT) Satisfactory	
<b>Safety Devices / Operational Aids</b>			
● 66.	Boom Angle Indicator	(SAT) Satisfactory	
● 67.	Boom Length Indicator	(SAT) Satisfactory	
● 68.	Drum Rotation Indicator	(NA) Not Applicable	

Tandem Lift LLC disclaims all warranties, both express and implied, relating to the information, reports, opinions and analysis disclosed to the Customer by Tandem Lift LLC. Tandem Lift LLC shall not be liable for any errors or omissions, or any losses, injury or damages arising from the use of such information, reports, opinions and analysis by the Customer.

69.	Overload Protection	(SAT) Satisfactory
70.	Crane Level Indicator	(NOTE) Note
	Level on passenger side operating station needs to be slightly calibrated	
71.	Anti Two-Block Device	(SAT) Satisfactory
72.	Outrigger / Stabilizer Position Sensor	(SAT) Satisfactory
<b>Upper Structure</b>		
73.	Turntable	(SAT) Satisfactory
74.	Mounting	(SAT) Satisfactory
75.	Turret	(SAT) Satisfactory
76.	Hydraulic Pump(s)	(SAT) Satisfactory
77.	Hydraulic Hoses / Tubes / Fittings	(SAT) Satisfactory
78.	Hydraulic Pressure	(SAT) Satisfactory
79.	Electrical Wiring	(SAT) Satisfactory
80.	Hoist Brake	(SAT) Satisfactory
81.	Hoist - Motor / Valves / Lines	(SAT) Satisfactory
82.	Hoist Spooling	(SAT) Satisfactory
83.	Hoist - Minimum 2 Rope Wraps	(SAT) Satisfactory
84.	Swing Gear Box	(SAT) Satisfactory
85.	Electrocution Warning Sign	(SAT) Satisfactory
<b>Main Boom</b>		
86.	Lift Cylinder(s)	(SAT) Satisfactory
87.	Telescoping Cylinder(s)	(SAT) Satisfactory
88.	Hydraulic Hoses / Tubes / Fittings	(SAT) Satisfactory
89.	Holding Device	(SAT) Satisfactory
90.	Boom Sections Alignment	(SAT) Satisfactory
91.	Wear Pads	(SAT) Satisfactory
92.	Sheave(s)	(SAT) Satisfactory
93.	Hoist Line Dead End	(SAT) Satisfactory
94.	Wire Rope Retainer	(SAT) Satisfactory
95.	Boom Hinge Pin	(SAT) Satisfactory
96.	Boom Head Section	(SAT) Satisfactory
97.	Structure	(SAT) Satisfactory
<b>Load Block &amp; Hook</b>		
103.	Capacity Marking	(SAT) Satisfactory
104.	Weight Marking	(SAT) Satisfactory
105.	Sheave(s)	(SAT) Satisfactory
106.	Safety Latch(s)	(SAT) Satisfactory
107.	0° Hook Bend or Twist	(SAT) Satisfactory
108.	5% Hook Opening or 1/4" Max	(SAT) Satisfactory
109.	10% Hook Wear Max	(SAT) Satisfactory
110.	Bearing	(SAT) Satisfactory
111.	Wedge Socket / End Fitting	(SAT) Satisfactory
112.	Reeving	(SAT) Satisfactory
<b>Wire Rope</b>		
121.	Rope Damage	(MON) Monitor P121
	Single strand protruding in 1 lay. Approx. 50' from end.	
122.	Measured Wear	(SAT) Satisfactory
123.	Broken Wires	(SAT) Satisfactory

Tandem Lift LLC disclaims all warranties, both express and implied, relating to the information, reports, opinions and analysis disclosed to the Customer by Tandem Lift LLC. Tandem Lift LLC shall not be liable for any errors or omissions, or any losses, injury or damages arising from the use of such information, reports, opinions and analysis by the Customer.

● 124. Lubrication	(SAT) Satisfactory
● 125. End Connectors	(SAT) Satisfactory
<b>Verification and Completion</b>	
126. Inspector Name and Signature	Chris Volz
	
127. Date of Inspection	10/04/2025
128. Customer Name and Signature	
● 129. Certificate Issued	(Y) Yes



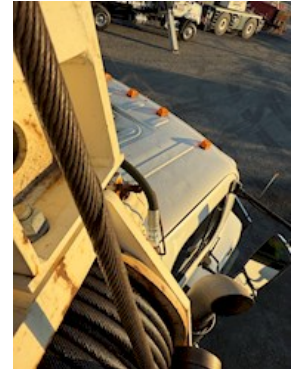
P45.1



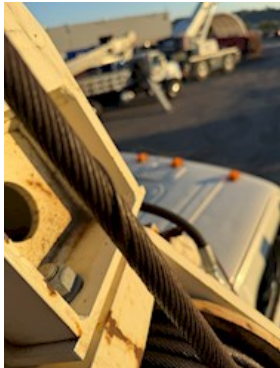
P45.2



P45.3



P121.4



P121.5