



Prepared for:

Sautter Crane rental

2900 Black Lake Place Philadelphia, PA 19154

Sautter Yard

on

10/14/2023

Please return the entire report.

Customer Sign Off

-If there are no deficiencies nothing needs to be done

-If there are any (HIGH, RED) deficiencies please follow the instructions below

The deficiencies marked HIGH in RED shall be corrected and this report must be dated, signed and email THIS ENTIRE REPORT to tony.rossi@tandemlift.com or jon.santimaw@tandemlift.com. After the signed document is received, a certification and label will be issued. The deficiencies denoted with (REC, MEDIUM, ORANGE) are recommended and are not required to be corrected to achieve certification. However those items should be corrected to improve equipment reliability and performance.

-The undersigned verifies that the deficiencies denoted with (DEF, HIGH, RED) have been corrected.

Signature

Date

Table of Contents

 High  Med  Low Section

Inspection - *Sautter Yard*

Boom Truck Crane:
1T914792VDW140744 - S186

0

0


0

1.0

Tandem Lift LLC disclaims all warranties, both express and implied, relating to the information, reports, opinions and analysis disclosed to the Customer by Tandem Lift LLC. Tandem Lift LLC shall not be liable for any errors or omissions, or any losses, injury or damages arising from the use of such information, reports, opinions and analysis by the Customer.

Overview



Breakdown by Form

Form Type	 High	 Med	 Low	# Forms
Inspection	0	0	0	1
Overall:	0	0	0	1

Breakdown by Location

Location	 High	 Med	 Low	# Forms
Sautter Yard	0	0	0	1
Overall:	0	0	0	1

Breakdown by Asset

Asset Type	 High	 Med	 Low	# Assets
Boom Truck Crane	0	0	0	1
Overall:	0	0	0	1

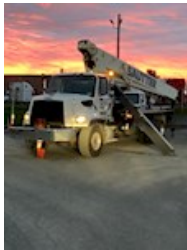
Tandem Lift LLC disclaims all warranties, both express and implied, relating to the information, reports, opinions and analysis disclosed to the Customer by Tandem Lift LLC. Tandem Lift LLC shall not be liable for any errors or omissions, or any losses, injury or damages arising from the use of such information, reports, opinions and analysis by the Customer.



Inspection

Sautter Crane rental
 2900 Black Lake Place
 Philadelphia, PA 19154

FolderID: 101423S186
 FormID: 18154768



Boom Truck Crane

Location: Sautter Yard
 2900 Black Lake Place
 Philadelphia, PA 19154

Serial #: 1T914792VDW140744

TagID: S186

*Additional Notes: 92 ft boom
 2 parts of line*

Manufacturer: Terex

Model Number: BT4792

Capacity: 23 1/2 Tons

Hook Type : Load Block & Hook

Length/Lift: 92 ft.

Priorities Found: ● 103 - Good

Miles and Hours

1. Miles	75,172 Miles
2. Hours	6,571 Hours

General

● 3. Guards / Covers	(SAT) Satisfactory
● 4. External Lights	(SAT) Satisfactory
● 5. Warning Decals	(SAT) Satisfactory
● 6. Housekeeping	(SAT) Satisfactory
● 7. Hand Signal Chart	(SAT) Satisfactory

Driver's Cab

● 12. Glass	(SAT) Satisfactory
● 13. Windshield Wipers	(SAT) Satisfactory
● 14. Mirrors	(SAT) Satisfactory
● 15. Fire Extinguishers	(SAT) Satisfactory
● 16. Seat	(SAT) Satisfactory
● 17. Seat Belt	(SAT) Satisfactory
● 18. Power Take-Off	(SAT) Satisfactory
● 19. Parking Brake	(SAT) Satisfactory
● 20. Air Pressure	(SAT) Satisfactory
● 21. Instruments / Gauges	(SAT) Satisfactory
● 22. Switches / Functions	(SAT) Satisfactory
● 23. Horn	(SAT) Satisfactory
● 24. Steering	(SAT) Satisfactory
● 25. Engine Clutch	(SAT) Satisfactory
● 26. Accelerator	(SAT) Satisfactory
● 27. Brake	(SAT) Satisfactory

Tandem Lift LLC disclaims all warranties, both express and implied, relating to the information, reports, opinions and analysis disclosed to the Customer by Tandem Lift LLC. Tandem Lift LLC shall not be liable for any errors or omissions, or any losses, injury or damages arising from the use of such information, reports, opinions and analysis by the Customer.

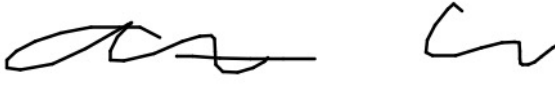
● 28. Defroster	(SAT) Satisfactory
● 29. Operator's Manual	(SAT) Satisfactory
Truck Power Plant	
● 30. Performance	(SAT) Satisfactory
● 31. Exhaust System Guards & Insulators	(SAT) Satisfactory
● 32. Belts / Hoses	(SAT) Satisfactory
● 33. Moving Parts Guards & Covers	(SAT) Satisfactory
Chassis	
● 34. Transmission	(SAT) Satisfactory
● 35. Driveline	(SAT) Satisfactory
● 36. Tires / Wheels	(SAT) Satisfactory
● 37. Tire Air Pressure	(SAT) Satisfactory
● 38. Chassis Frame Members	(SAT) Satisfactory
● 39. Hydraulic Hoses / Tubing / Fittings	(SAT) Satisfactory
● 40. Hydraulic Fluid Level	(SAT) Satisfactory
● 41. Anti Skid Surface	(SAT) Satisfactory
● 42. Guards / Covers	(SAT) Satisfactory
● 43. Backup Alarm	(SAT) Satisfactory
Outriggers / Stabilizers	
● 44. Boxes	(SAT) Satisfactory
● 45. Beams	(SAT) Satisfactory
● 46. Cylinders	(SAT) Satisfactory
● 47. Floats / Pads	(SAT) Satisfactory
● 48. Hydraulic Hoses / Tubes / Fittings	(SAT) Satisfactory
● 49. Holding Valves	(SAT) Satisfactory
● 50. Caution / Warning Signs	(SAT) Satisfactory
Operators Station	
● 51. Grab Rails / Steps / Platforms	(SAT) Satisfactory
● 52. Door Restraint	(NA) Not Applicable
● 53. Windows	(NA) Not Applicable
● 54. Anti Skid Surface	(SAT) Satisfactory
● 55. Fire Extinguisher	(SAT) Satisfactory
● 56. Electrocutation Warning Sign	(SAT) Satisfactory
● 57. Controls Identified	(SAT) Satisfactory
● 58. Accelerator / Throttle Control	(SAT) Satisfactory
● 59. Horn	(SAT) Satisfactory
● 60. Seat	(SAT) Satisfactory
Load Chart	
● 61. Per Configuration	(SAT) Satisfactory
● 62. Durable	(SAT) Satisfactory
● 63. Legible	(SAT) Satisfactory
● 64. Secured	(SAT) Satisfactory
● 65. Visible From Operators Station	(SAT) Satisfactory
Safety Devices / Operational Aids	
● 66. Boom Angle Indicator	(SAT) Satisfactory
● 67. Boom Length Indicator	(SAT) Satisfactory
● 68. Drum Rotation Indicator	(SAT) Satisfactory

Tandem Lift LLC disclaims all warranties, both express and implied, relating to the information, reports, opinions and analysis disclosed to the Customer by Tandem Lift LLC. Tandem Lift LLC shall not be liable for any errors or omissions, or any losses, injury or damages arising from the use of such information, reports, opinions and analysis by the Customer.

● 69. Overload Protection	(SAT) Satisfactory
● 70. Crane Level Indicator	(SAT) Satisfactory
● 71. Anti Two-Block Device	(SAT) Satisfactory
● 72. Outrigger / Stabilizer Position Sensor	(SAT) Satisfactory
Upper Structure	
● 73. Turntable	(SAT) Satisfactory
● 74. Mounting	(SAT) Satisfactory
● 75. Turret	(SAT) Satisfactory
● 76. Hydraulic Pump(s)	(SAT) Satisfactory
● 77. Hydraulic Hoses / Tubes / Fittings	(SAT) Satisfactory
● 78. Hydraulic Pressure	(SAT) Satisfactory
● 79. Electrical Wiring	(SAT) Satisfactory
● 80. Hoist Brake	(SAT) Satisfactory
● 81. Hoist - Motor / Valves / Lines	(SAT) Satisfactory
● 82. Hoist Spooling	(SAT) Satisfactory
■ 2 parts of line	
● 83. Hoist - Minimum 2 Rope Wraps	(SAT) Satisfactory
● 84. Swing Gear Box	(SAT) Satisfactory
● 85. Electrocution Warning Sign	(SAT) Satisfactory
Main Boom	
● 86. Lift Cylinder(s)	(SAT) Satisfactory
● 87. Telescoping Cylinder(s)	(SAT) Satisfactory
● 88. Hydraulic Hoses / Tubes / Fittings	(SAT) Satisfactory
● 89. Holding Device	(SAT) Satisfactory
● 90. Boom Sections Alignment	(SAT) Satisfactory
● 91. Wear Pads	(SAT) Satisfactory
● 92. Sheave(s)	(SAT) Satisfactory
● 93. Hoist Line Dead End	(SAT) Satisfactory
● 94. Wire Rope Retainer	(SAT) Satisfactory
● 95. Boom Hinge Pin	(SAT) Satisfactory
● 96. Boom Head Section	(SAT) Satisfactory
● 97. Structure	(SAT) Satisfactory
Load Block & Hook	
● 103. Capacity Marking	(SAT) Satisfactory
● 104. Weight Marking	(SAT) Satisfactory
● 105. Sheave(s)	(SAT) Satisfactory
● 106. Safety Latch(s)	(SAT) Satisfactory
● 107. 0° Hook Bend or Twist	(SAT) Satisfactory
● 108. 5% Hook Opening or 1/4" Max	(SAT) Satisfactory
● 109. 10% Hook Wear Max	(SAT) Satisfactory
● 110. Bearing	(SAT) Satisfactory
● 111. Wedge Socket / End Fitting	(SAT) Satisfactory
● 112. Reeving	(SAT) Satisfactory
■ 2 parts of line	
Wire Rope	
● 121. Rope Damage	(NA) Not Applicable
122. Measured Wear	

Tandem Lift LLC disclaims all warranties, both express and implied, relating to the information, reports, opinions and analysis disclosed to the Customer by Tandem Lift LLC. Tandem Lift LLC shall not be liable for any errors or omissions, or any losses, injury or damages arising from the use of such information, reports, opinions and analysis by the Customer.

9/16 inch Actual- .580 inch

● 123. Broken Wires	(SAT) Satisfactory
● 124. Lubrication	(SAT) Satisfactory
● 125. End Connectors	(SAT) Satisfactory
Verification and Completion	
126. Inspector Name and Signature	Anthony Capozzi
	
127. Date of Inspection	01/14/2023
128. Customer Name and Signature	
● 129. Certificate Issued	(Y) Yes

Tandem Lift LLC disclaims all warranties, both express and implied, relating to the information, reports, opinions and analysis disclosed to the Customer by Tandem Lift LLC. Tandem Lift LLC shall not be liable for any errors or omissions, or any losses, injury or damages arising from the use of such information, reports, opinions and analysis by the Customer.