



Prepared for:

Sautter Crane rental

2900 Black Lake Place Philadelphia, PA 19154

Cleveland Cliffs Steel Mill

on

4/23/2024

Please return the entire report.

Customer Sign Off

-If there are no deficiencies nothing needs to be done

-If there are any (HIGH, RED) deficiencies please follow the instructions below

The deficiencies marked HIGH in RED shall be corrected and this report must be dated, signed and email THIS ENTIRE REPORT to tony.rossi@tandemlift.com or jon.santimaw@tandemlift.com. After the signed document is received, a certification and label will be issued. The deficiencies denoted with (REC, MEDIUM, ORANGE) are recommended and are not required to be corrected to achieve certification. However those items should be corrected to improve equipment reliability and performance.

-The undersigned verifies that the deficiencies denoted with (DEF, HIGH, RED) have been corrected.

Signature

Date

Table of Contents




 High  Med  Low Section

Hydraulic Boom Crane Inspection Report (1910.180 & 1926.1400) - <i>Cleveland Cliffs Steel Mill</i>	Telescoping Boom Crane: 233433 - S181	0	3	2	1.0
--	---------------------------------------	---	---	---	------------

Tandem Lift LLC disclaims all warranties, both express and implied, relating to the information, reports, opinions and analysis disclosed to the Customer by Tandem Lift LLC. Tandem Lift LLC shall not be liable for any errors or omissions, or any losses, injury or damages arising from the use of such information, reports, opinions and analysis by the Customer.

Overview

Breakdown by Form

Form Type	 High	 Med	 Low	# Forms
Hydraulic Boom Crane Inspection Report (1910.180 & 1926.1400)	0	3	2	1
Overall:	0	3	2	1

Breakdown by Location

Location	 High	 Med	 Low	# Forms
Cleveland Cliffs Steel Mill	0	3	2	1
Overall:	0	3	2	1

Breakdown by Asset

Asset Type	 High	 Med	 Low	# Assets
Telescoping Boom Crane	0	3	2	1
Overall:	0	3	2	1

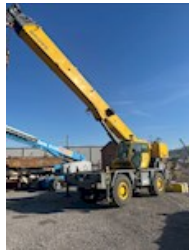
Tandem Lift LLC disclaims all warranties, both express and implied, relating to the information, reports, opinions and analysis disclosed to the Customer by Tandem Lift LLC. Tandem Lift LLC shall not be liable for any errors or omissions, or any losses, injury or damages arising from the use of such information, reports, opinions and analysis by the Customer.



Hydraulic Boom Crane Inspection Report (1910.180 & 1926.1400)

FolderID: 042324S181
 FormID: 20159500

Sautter Crane rental
 2900 Black Lake Place
 Philadelphia, PA 19154



Telescoping Boom Crane

Location: Cleveland Cliffs Steel Mill
 200 Strode Ave.
 Coatesville, PA 19320

Serial Number: 233433

Unit Number: S181

*Additional Notes: 102 ft boom
 4 parts of line
 Can't inspect extend and retract cables without
 disassembling boom*

Manufacturer: Grove

Model: RT540E

Capacity: 40 Tons

Length/Lift: 102'

Type of Crane: Rough Terrain Crane

Number of Hoists: Main and Auxiliary (Not in Use)

Boom Configuration: Main Boom w/o Attached Jib

Load Test: No

Priorities Found: ● **3 - Medium** ● **2 - Low** ● **91 - Good**

General

1. Location of Equipment **Cleveland Cliffs Steel Mill**

2. Customer Sign Off

Please return the entire report.

Customer Sign Off

-If there are no deficiencies nothing needs to be done

-If there are any (HIGH, RED) deficiencies please follow the instructions below

The deficiencies marked HIGH in RED shall be corrected and this report must be dated, signed and email THIS ENTIRE REPORT to tony.rossi@tandemlift.com or jon.santimaw@tandemlift.com. After the signed document is received, a certification and label will be issued. The deficiencies denoted with (REC, MEDIUM, ORANGE) are recommended and are not required to be corrected to achieve certification. However those items should be corrected to improve equipment reliability and performance.

-The undersigned verifies that the deficiencies denoted with (DEF, HIGH, RED) have been corrected.

Signature

3. Hours & Mileage

Hours	Mileage
3,269	N/A

Inspection Information

4. Inspection Number **042324S181**

5. Inspection Date **04/23/2024**

● 6. Inspection Type **(Ann) Annual**

Information & Records

● 7. Documentation of Annual/Comprehensive Inspection **(SAT) Satisfactory**

● 8. Hand Signal Chart **(SAT) Satisfactory**

● 9. Safety and Warning Decals **(SAT) Satisfactory**

● 10. Operators Manual **(SAT) Satisfactory**

Safety Devices & Operational Aids

● 11. Backup Alarm **(SAT) Satisfactory**


Tandem Lift LLC disclaims all warranties, both express and implied, relating to the information, reports, opinions and analysis disclosed to the Customer by Tandem Lift LLC. Tandem Lift LLC shall not be liable for any errors or omissions, or any losses, injury or damages arising from the use of such information, reports, opinions and analysis by the Customer.

● 12. Audible Warning Device	(SAT) Satisfactory	
● 13. Boom Angle Indicator	(SAT) Satisfactory	
● 14. Boom Length Indicator	(SAT) Satisfactory	
● 15. Drum Rotation Indicator(s)	(SAT) Satisfactory	
● 16. Anti Two-Block Device/System	(SAT) Satisfactory	
● 17. Load Moment Indicator (LMI)	(SAT) Satisfactory	
● 18. Load Weight Indicator	(SAT) Satisfactory	
● 19. Radius Indicator	(SAT) Satisfactory	
● 20. Level Indicator(s)	(SAT) Satisfactory	
● 21. Fire Extinguisher	(SAT) Satisfactory	
Load Chart		
● 22. Visible/Accessible	(SAT) Satisfactory	
● 23. Per Configuration	(SAT) Satisfactory	
● 24. Durable/Legible/Secured	(SAT) Satisfactory	
Carrier		
● 25. Steering	(SAT) Satisfactory	
● 26. Parking Brake	(SAT) Satisfactory	
● 27. Exterior Lights (Headlights, Turn Signals, Brake Lights, Reverse Lights)	(SAT) Satisfactory	
● 28. Windshield & Wipers	(SAT) Satisfactory	
● 29. Windows & Mirrors	(SAT) Satisfactory	
● 30. Wheels & Tires	(MON) Monitor	P30
■ <i>Right rear tire cut.</i>		
● 31. Engine	(SAT) Satisfactory	
● 32. Exhaust System	(SAT) Satisfactory	
● 33. Drive Line	(SAT) Satisfactory	
● 34. Main Frame Members	(SAT) Satisfactory	
● 35. Hoses/Fittings//Valves	(SAT) Satisfactory	
● 36. Hydraulic Tank & Fluid Level	(SAT) Satisfactory	
● 37. Slip Resistant Walking Surfaces	(SAT) Satisfactory	
● 38. Steps/Ladders/Handrails	(SAT) Satisfactory	
Outriggers/Stabilizers		
● 39. Structure & Mounting	(SAT) Satisfactory	
● 40. Boxes & Beams	(SAT) Satisfactory	
● 41. Cylinders	(SAT) Satisfactory	
● 42. Pads/Floats	(SAT) Satisfactory	
● 43. Hoses/Fittings//Valves	(SAT) Satisfactory	
Operators Station		
● 44. Windows & Wipers	(SAT) Satisfactory	
● 45. Cab Door Restraint	(SAT) Satisfactory	
● 46. Cab Access	(SAT) Satisfactory	
● 47. Steps/Ladders/Handrails	(SAT) Satisfactory	
● 48. Anti-Skid Stepping Surfaces	(SAT) Satisfactory	
● 49. Fire Extinguisher	(SAT) Satisfactory	
● 50. Operator Horn	(SAT) Satisfactory	
● 51. Controls Identified	(SAT) Satisfactory	
● 52. Control Functions	(SAT) Satisfactory	
● 53. Power Plant Controls	(SAT) Satisfactory	

Tandem Lift LLC disclaims all warranties, both express and implied, relating to the information, reports, opinions and analysis disclosed to the Customer by Tandem Lift LLC. Tandem Lift LLC shall not be liable for any errors or omissions, or any losses, injury or damages arising from the use of such information, reports, opinions and analysis by the Customer.

● 54. Operator Cutoff Switch (Deadman)	(SAT) Satisfactory	
● 55. Brake & Clutch	(SAT) Satisfactory	
● 56. Travel Controls	(SAT) Satisfactory	
● 57. Accelerator/Throttle Control	(SAT) Satisfactory	
● 58. Hoses/Fittings/Valves	(SAT) Satisfactory	
● 59. Housekeeping	(SAT) Satisfactory	
Rotating Upper Structure		
● 60. Structure	(SAT) Satisfactory	
● 61. Hoses/Fittings/Valves	(SAT) Satisfactory	
● 62. Hydraulic & Pneumatic Pumps	(SAT) Satisfactory	
● 63. Hydraulic Pressure	(SAT) Satisfactory	
● 64. Electrical Wiring	(SAT) Satisfactory	
● 65. Ring & Pinion Gear	(SAT) Satisfactory	
● 66. Swing System/Assembly	(SAT) Satisfactory	
● 67. Counterweight Frame	(SAT) Satisfactory	
● 68. Counterweight Mounting	(SAT) Satisfactory	
Hoist System		
● 69. Brakes & Clutch System	(SAT) Satisfactory	
● 70. Wire Rope Reeving	(SAT) Satisfactory	
■ 4 parts of line		
● 71. 2 Rope Wrap Minimum	(MON) Monitor	
■ Block does not reach the ground with 4 parts of line and all main boom out		
● 72. Hoist Motor	(SAT) Satisfactory	
● 73. Hoses/Fittings/Valves	(SAT) Satisfactory	
● 74. Drums/Lagging/Flanges	(REC) Recommendation	P74
■ Cable roller not mounted on main winch		
● 75. Anchor System	(SAT) Satisfactory	
● 76. Hoist Spooling	(REC) Recommendation	P76
■ Auxiliary Drum needs to be re spooled		
Main Boom		
● 77. Lift Cylinder(s)	(SAT) Satisfactory	
● 78. Telescoping Boom Cylinder(s)	(SAT) Satisfactory	
● 79. Hoses/Fittings/Valves	(SAT) Satisfactory	
● 80. Holding Device	(SAT) Satisfactory	
● 81. Boom Sections Alignment	(SAT) Satisfactory	
● 82. Wear Pads	(SAT) Satisfactory	
● 83. Sheaves	(SAT) Satisfactory	
● 84. Wire Rope Retainers	(REC) Recommendation	P84
■ Top cable retainer pin on head of boom bent		
● 85. Boom Hinge Pin	(SAT) Satisfactory	
● 86. Boom Head Section	(SAT) Satisfactory	
● 87. Auxiliary Boom Head	(NA) Not Applicable	
● 88. Structure	(SAT) Satisfactory	
Main Drum Wire Rope		
89. Wire Rope Information		
Diameter	Construction/Type	Number of Parts
.648 inch	Non Rotational	4

Tandem Lift LLC disclaims all warranties, both express and implied, relating to the information, reports, opinions and analysis disclosed to the Customer by Tandem Lift LLC. Tandem Lift LLC shall not be liable for any errors or omissions, or any losses, injury or damages arising from the use of such information, reports, opinions and analysis by the Customer.

● 90. Rope Damage	(SAT) Satisfactory
● 91. Lubrication	(SAT) Satisfactory
● 92. End Connectors	(SAT) Satisfactory
Main Hoist Load Block/Headache Ball/Hook	
93. Capacity and Weight	
Capacity	Weight
40 Tons	588 lbs
● 94. Capacity Marking	(SAT) Satisfactory
● 95. Weight Marking	(SAT) Satisfactory
● 96. Sheave(s)	(SAT) Satisfactory
● 97. Safety Latch(es)	(SAT) Satisfactory
● 98. 0° Hook Bend/Twist	(SAT) Satisfactory
● 99. 5% Hook Opening or 1/4" Max	(SAT) Satisfactory
● 100. 10% Hook Wear Max	(SAT) Satisfactory
● 101. Bearing	(SAT) Satisfactory
● 102. Wedge Socket/End Fitting	(SAT) Satisfactory
● 103. Reeving	(SAT) Satisfactory
■ 4 parts of line	
Verification and Completion	
104. Inspector Name & Signature	Anthony Capozzi
	
105. Additional Inspection Notes	
● 106. Sticker Given	(Y) Yes, Given on Site



P30.1



P74.2



P76.3



P84.4