



**Inspection**  
**Sautter Crane Rental**

FolderID: 12669  
FormID: 17877102



**Hydraulic Boom Crane Inspection Report**  
**(1910.180 & 1926.1400-1926.1441 as necessary)**

**Completed by: Chris Hunter on 09/15/2023**

Location:	USA
Serial #:	096 607
Unit #:	S242

Manufacturer:	Liebherr
Model:	LTR1220
Capacity:	250 Ton
Length/Lift:	197'
Type of Crane:	Tele. Crawler (1910.180 & 1926.1400)
Number of Hoists:	Main & Auxiliary (Not in Use)
Boom Configuration:	Main Boom w/o Attached Jib

Priorities Found: ● 1 - Medium ● 91 - Good

**Location of Equipment**

1. Location of Equipment **Jersey City, NJ**

**Customer Sign Off**

2. Customer Sign Off

*IF THERE ARE NO DEFICIENCIES NOTHING NEEDS TO BE DONE.*

*IF THERE ARE ANY HIGH, RED, DEFICIENCIES PLEASE FOLLOW THE BELOW INSTRUCTIONS*

*The deficiencies marked HIGH in RED shall be corrected and this report must be dated, signed and email THIS PAGE ONLY to either jaime@atlanticcrane.com or gina@atlanticcrane.com or fax THIS PAGE ONLY to our office at 215-639-2316 and a certification and sticker will be issued. The above deficiencies denoted with (REC, MEDIUM, ORANGE) are recommended and are not required to be corrected to achieve certification. However, those items should be corrected to improve equipment reliability and safety.*

*The undersigned verifies the listed deficiencies denoted with an (DEF, HIGH, RED) have been corrected.*

\_\_\_\_\_  
Signature

\_\_\_\_\_  
Date

**Inspection Information**

3. Inspection Number	<b>23091501CH</b>
4. Inspection Date	<b>09/15/2023</b>
<span style="color: green;">●</span> 5. Inspection Type	<b>(Ann) Annual</b>

**Information & Records**

<span style="color: green;">●</span> 6. Documentation of Annual / Comprehensive Inspection	<b>(SAT) Satisfactory</b>
<span style="color: green;">●</span> 7. Hand Signal Chart	<b>(SAT) Satisfactory</b>
<span style="color: green;">●</span> 8. Safety and Warning Labels	<b>(SAT) Satisfactory</b>
<span style="color: green;">●</span> 9. Operator's Manual	<b>(SAT) Satisfactory</b>

**Safety Devices / Operational Aids**

<span style="color: green;">●</span> 10. Audible Reverse Signal Alarm	<b>(SAT) Satisfactory</b>
<span style="color: green;">●</span> 11. Audible Warning Device	<b>(SAT) Satisfactory</b>
<span style="color: green;">●</span> 12. Boom Angle Indicator	<b>(SAT) Satisfactory</b>
<span style="color: green;">●</span> 13. Drum Rotation Indicator	<b>(SAT) Satisfactory</b>
<span style="color: green;">●</span> 14. Two-Block System	<b>(SAT) Satisfactory</b>
<span style="color: green;">●</span> 15. Load Moment Indicator	<b>(SAT) Satisfactory</b>



Atlantic Crane Inspection Services disclaims all warranties, both express and implied, relating to the information, reports, opinions and analysis disclosed to the Customer by Atlantic Crane Inspection Services. Atlantic Crane Inspection Services shall not be liable for any errors or omissions, or any losses, injury or damages arising from the use of such information, reports, opinions and analysis by the Customer.

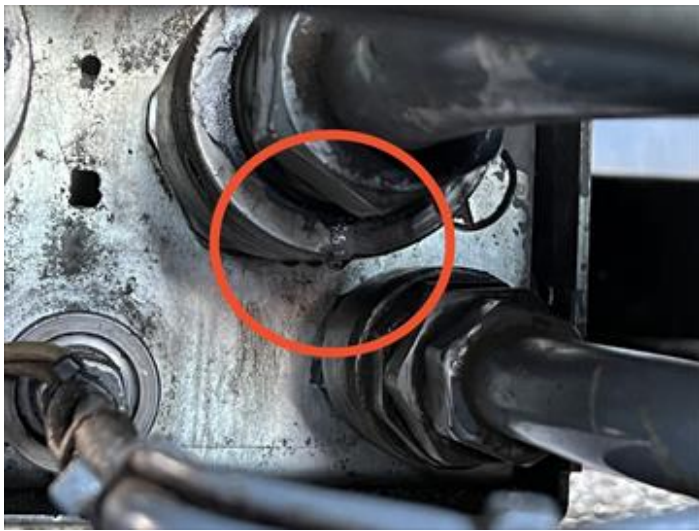
● 16.	Load Weight Indicator	(SAT) Satisfactory
● 17.	Level Indicator	(SAT) Satisfactory
● 18.	Fire Extinguisher	(SAT) Satisfactory
<b>Load Chart</b>		
● 19.	Load Chart	(SAT) Satisfactory
● 20.	Per Configuration	(SAT) Satisfactory
● 21.	Visible from Fixed Operator's Station	(SAT) Satisfactory
<b>Crawler Assembly</b>		
● 22.	Carbody And sideframes	(SAT) Satisfactory
● 23.	Chain and idler sprokets	(SAT) Satisfactory
● 24.	Track Pads and pins	(SAT) Satisfactory
● 25.	Travel Steering, Brakes, and Locking devices	(SAT) Satisfactory
● 26.	Steering Clutches	(SAT) Satisfactory
<b>Outriggers</b>		
● 27.	Boxes & Beams	(SAT) Satisfactory
● 28.	Hydraulic Cylinders	(SAT) Satisfactory
● 29.	Pad / Float	(SAT) Satisfactory
● 30.	Hoses / Tubing / Fittings	(SAT) Satisfactory
● 31.	Holding Valves	(SAT) Satisfactory
● 32.	Caution / Warning Signs	(SAT) Satisfactory
<b>Operator's Station</b>		
● 33.	Windows/Wipers	(SAT) Satisfactory
● 34.	Cab Door Restraint	(SAT) Satisfactory
● 35.	Cab Access	(SAT) Satisfactory
● 36.	Steps / Ladders / Handrails	(SAT) Satisfactory
● 37.	Anti-Skid Stepping Surfaces	(SAT) Satisfactory
● 38.	Fire Extinguisher	(SAT) Satisfactory
● 39.	Electrocution Warning Sign(s)	(SAT) Satisfactory
● 40.	Horn	(SAT) Satisfactory
● 41.	Controls Identified	(SAT) Satisfactory
● 42.	Control Functions	(SAT) Satisfactory
● 43.	Power Plant Controls	(SAT) Satisfactory
● 44.	Brake and Clutch	(SAT) Satisfactory
● 45.	Travel Brakes	(SAT) Satisfactory
● 46.	Travel Controls	(SAT) Satisfactory
● 47.	Travel Mechanism	(SAT) Satisfactory
● 48.	Travel Locks	(SAT) Satisfactory
● 49.	Operator Cutoff (Deadman) Switch	(SAT) Satisfactory
<b>Rotating Upper Structure</b>		
● 50.	Engine Performance	(SAT) Satisfactory
● 51.	Exhaust System/Guards & Insulators	(SAT) Satisfactory
● 52.	Hoses	(SAT) Satisfactory
● 53.	Turntable / Bearing	(SAT) Satisfactory
● 54.	Counterweight Frame	(SAT) Satisfactory
● 55.	Ring and Pinion Gear	(SAT) Satisfactory
● 56.	Hydraulic and Pneumatic Pumps	(SAT) Satisfactory
● 57.	Hydraulic Tubes, Fitting, and Hoses	(SAT) Satisfactory
● 58.	Hydraulic Pressure	(SAT) Satisfactory

Atlantic Crane Inspection Services disclaims all warranties, both express and implied, relating to the information, reports, opinions and analysis disclosed to the Customer by Atlantic Crane Inspection Services. Atlantic Crane Inspection Services shall not be liable for any errors or omissions, or any losses, injury or damages arising from the use of such information, reports, opinions and analysis by the Customer.

● 59.	Electrical Wiring	(SAT) Satisfactory
● 60.	Swing System / Assembly	(SAT) Satisfactory
● 61.	Counterweight Mounting	(SAT) Satisfactory
● 62.	Counterweight Posted Warnings	(SAT) Satisfactory
● 63.	Electrocution Posted Warnings	(SAT) Satisfactory
● 64.	Structure	(SAT) Satisfactory
<b>Hoist System</b>		
● 65.	Brakes and Clutch System	(SAT) Satisfactory
● 66.	Wire Rope Reeving	(SAT) Satisfactory
● 67.	2 Rope Wrap Minimum	(SAT) Satisfactory
● 68.	Motor	(SAT) Satisfactory
● 69.	Drums/Lagging/Flanges	(SAT) Satisfactory
● 70.	Anchor System	(SAT) Satisfactory
● 71.	Hoist Spooling	(SAT) Satisfactory
<b>Main Boom</b>		
● 72.	Lift Cylinder(s)	(SAT) Satisfactory
● 73.	Telescoping Boom Cylinder(s)	(SAT) Satisfactory
● 74.	Hydraulic Hoses, Tubes, and Fittings	(SAT) Satisfactory
● 75.	Holding Device	(SAT) Satisfactory
● 76.	Boom Sections Alignment	(SAT) Satisfactory
● 77.	Wear Pads	(SAT) Satisfactory
● 78.	Sheaves	(SAT) Satisfactory
● 79.	Boom Hinge Pin	(SAT) Satisfactory
● 80.	Boom Head Section	(SAT) Satisfactory
● 81.	Structure	(SAT) Satisfactory
<b>Main Drum Wire Rope</b>		
82.	Diameter and wear	
	Size	Construction
	<b>24mm</b>	<b>RR</b>
		Number of Parts of Line
		<b>2 parts</b>
● 83.	Rope Damage	(SAT) None Visible at Time of inspection
● 84.	Lubrication	(SAT) Satisfactory
● 85.	End Connectors	(SAT) Satisfactory
<b>Auxiliary drum wire rope</b>		
86.	Diameter and wear	
	Size	Construction
	<b>24mm</b>	<b>RR</b>
		Number of Parts of Line
<b>Main Hoist Load Block/Ball &amp; Hook</b>		
87.	Capacity & Weight	
	Capacity	Weight
	<b>32 Ton</b>	<b>840 kg</b>
● 88.	Capacity Marking	(SAT) Satisfactory
● 89.	Weight Marking	(SAT) Satisfactory
● 90.	Sheave(s)	(SAT) Satisfactory
● 91.	Safety Latch(es)	(SAT) Satisfactory
● 92.	0° Hook Bend or Twist	(SAT) Satisfactory
● 93.	5% Hook Opening or 1/4" Max	(SAT) Satisfactory
● 94.	10% Hook Wear Max	(SAT) Satisfactory

Atlantic Crane Inspection Services disclaims all warranties, both express and implied, relating to the information, reports, opinions and analysis disclosed to the Customer by Atlantic Crane Inspection Services. Atlantic Crane Inspection Services shall not be liable for any errors or omissions, or any losses, injury or damages arising from the use of such information, reports, opinions and analysis by the Customer.

95. Bearing	(SAT) Satisfactory
96. Wedge Socket / End Fitting	(SAT) Satisfactory
97. Reeving	(SAT) Satisfactory
<b>Verification and Completion</b> 	
98. Inspector Name and Signature	Christopher J Hunter
	
99. Additional Inspection Notes	P120
<i>Hydraulic fitting on track extension cylinder is leaking.</i>	
100. Sticker Given	(N) No, Will be Mailed



P120.1